

PASSION BEYOND PEDALS



MARWI®

2024 Catalogue



Marwi® Group is one of the most globally organized manufactures in the bicycle industry, with production sites and offices in 5 countries (Taiwan, Indonesia, Netherlands, Czech Republic and Germany).

With a total of approximately 500 employees, **Marwi® Group** is one of the largest pedal manufacturers in the world.

Marwi® Group has dedicated itself to develop a new generation of pedals with the best performance on the world's stage. With over 30 years' experience in the bicycle industry, every step we take will be made to provide better riding equipment and innovative design.

With newly established automatic production lines in Marwi Taiwan, we are...

PASSION BEYOND PEDALS !

1983

"XERAMA" was established as the English name of the founding Taiwanese company as well as the brand name.

1992

"P.T. Xerama Bicycle Industrial" was founded in Tangerang/Indonesia.

1995

"Marwi International A/S" obtained the UNION® brand.

1998

"Marwi International A/S" merged with "Xerama Taiwan" and "Xerama Indonesia" into the new "Marwi Group". The Marwi Group owned from now on the brands UNION®, Ti-Dye®, and nightpro®.



MARWI Indonesia

2000

Marwi Europe's headquarters in the Netherlands was founded.

2007

Marwi Taiwan took the annual award for bicycle accessoires in the "innovative product awards" from the TBEA (Taiwan Bicycle Exporter's Association).

2009

Marwi won the 11th Taiwanese "overseas businessman award" from MOEA.

2010

Marwi Europe moved into their new office building.

2011

Marwi Taiwan completed their new office and factory building.



MARWI Europe branch office CZ

2012

Marwi Taiwan celebrate their 30th year anniversary.

2013

Marwi Taiwan set up automatic production lines for pedals and saddles.

2014

Marwi Taiwan installed the first robots in the Taiwan bike industry.

2015

Marwi Taiwan completed the first fully automatic pedal assembly line.

2016

Marwi Taiwan opened its own moulding factory.



MARWI Europe

2017

Marwi Taiwan installed robot automated aluminium die-casting.

2018

Marwi Taiwan installed their second saddle foaming carousel machine.

2019

Marwi introduced the patented SANDBLOCK® pedal technology.

2020

Marwi Taiwan starts building a new factory.

2021

Marwi Taiwan finished building the new factory.

2022

The First Year of Marwi Group ESG.

2023

GHG Inventory and Pedal CFP are both verified.

2024

Marwi Group is **PASSION BEYOND PEDALS**.



MARWI R&D Germany

Brand new!

Factory Building

- State of the art smart technology
- Sustainable and energy-saving
- Increased capacity



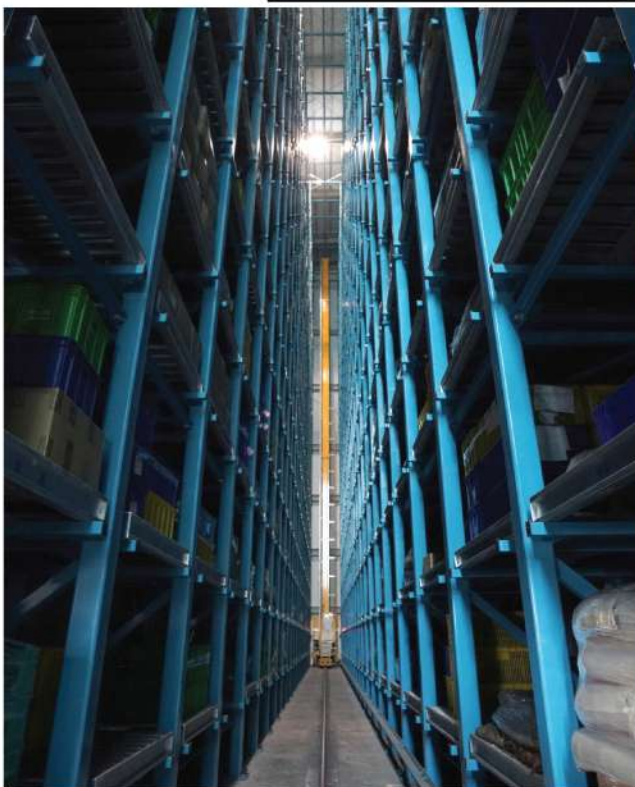
Fully Computerized Production Control System

- "One touch" overview by tablets
- Monitored on every production level



Robotized Automatic Warehouse System

- Fully automatized product picking system





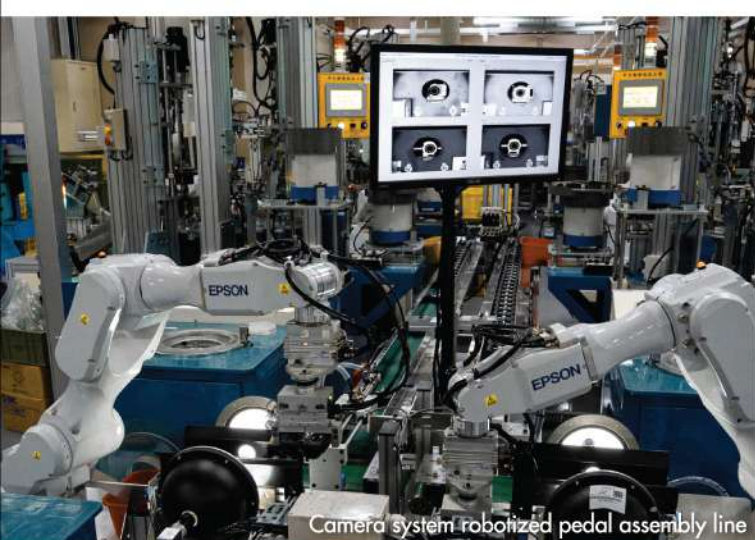
Robotized die-casting machines



Injection molding department



Robotized 2-component injection molding



Camera system robotized pedal assembly line



Robotized pedal assembly line

Vacuum saddle production carousel



Saddle printing department



Vacuum saddle production carousel



CNC department



Automatic packing line



Rigorous Fatigue Testing

In our new Quality Control Laboratory we investigate the products and components with the newest testing equipment.

We examine permanently with static and dynamic strength and durability tests, deep temperature impact tests, etc...

Overview testing facility



Saddle and seatpost fatigue test

Overview testing facility

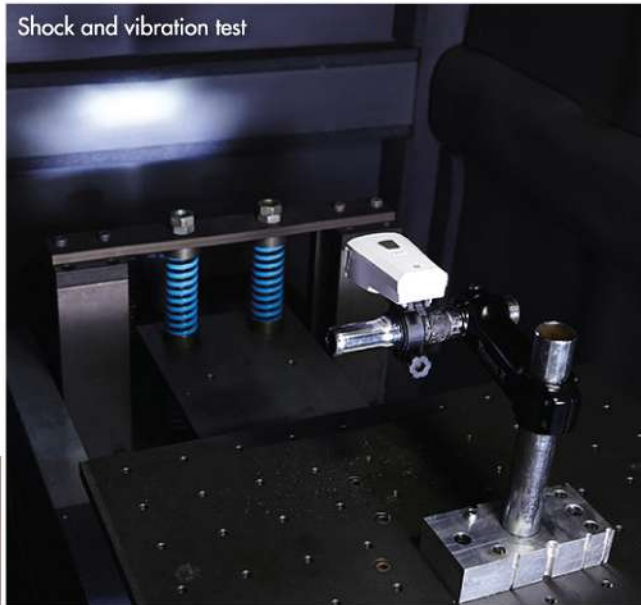


Shock and vibration test

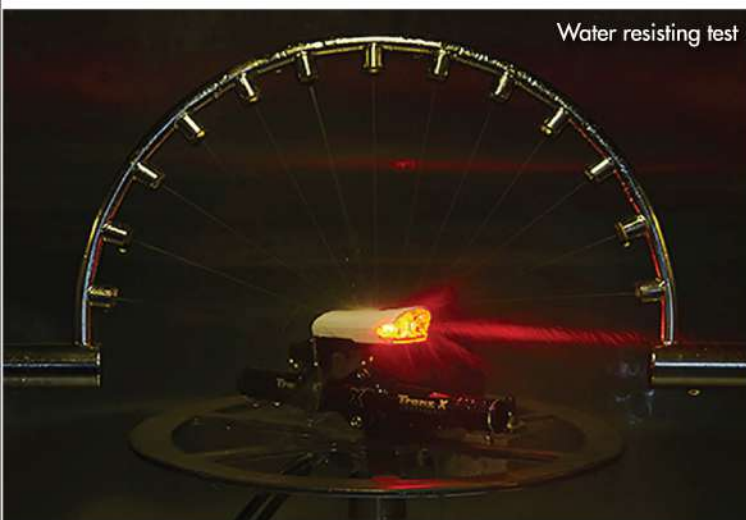
Quality-Inspection

According to our QA/QC-System we control with several QC-tests the various production steps. Furthermore we check the numerous quality parameters of components and products, like hardness, dimensions, water resistance, environmental and chemical resistance (salt spray test) and others...

Shock and vibration test



Water resisting test



Saddle fatigue test



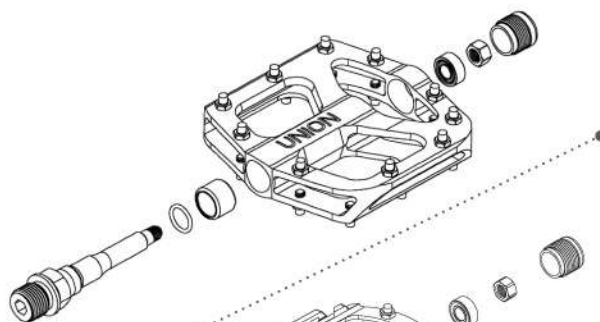
Clipless pedal durability test



Pedal Bearing Systems

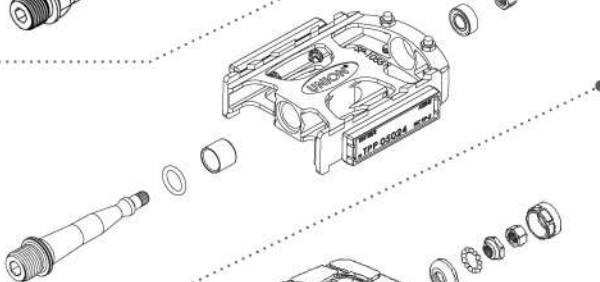
NCS

- **Needle + Cartridge System**
heat-treated Cr-Mo axle
(made in Taiwan)



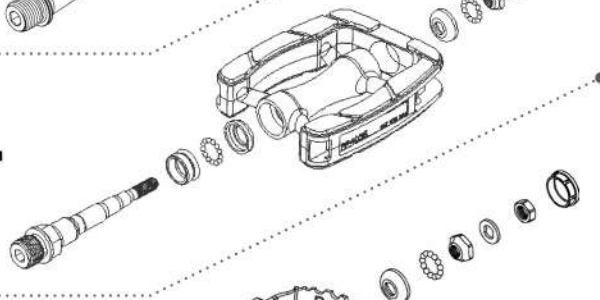
CBS

- **Cartridge + Bushing System**
heat-treated Cr-Mo axle
(made in Taiwan)



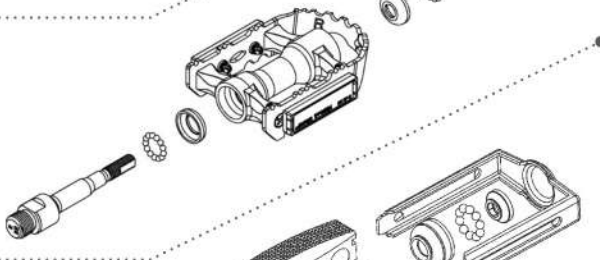
LBA

- **Adjustable light weight ball bearings 3/32"**
heat-treated boron steel axle



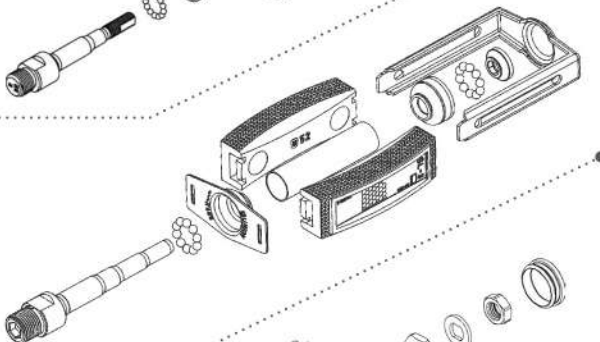
BA

- **Adjustable ball bearings 1/8"**
heat-treated boron steel axle



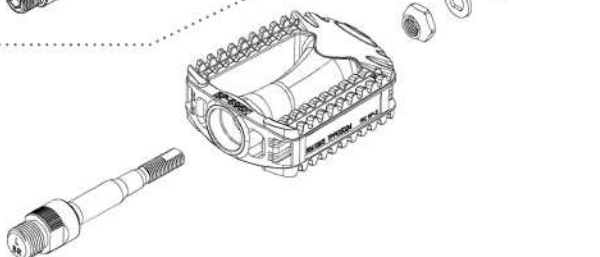
BC

- **Ball bearings, classic type**
heat-treated boron steel axle



NB

- **Adjustable Non-Ball bearing type**
heat-treated boron steel axle



CONTENT

- 12 - 28 UNION** Pedals
- 29 - 30 Selle San Remo** Saddles
- 31 - 34 SSR Pro** Saddles
- 35 - 36 UNION** Steel & Aluminium Hubs
- 37 - 38 UNION** E-Bike Lights
- 39 - 41 UNION** Dynamo Lights & Dynamos
- 42 - 43 UNION** Battery Lights
 - 44 UNION** Li-Ion Battery Lights
 - 45 UNION** Cycle Computers
- 46 - 47 BikeTool** Bicycle Tools
- 48 - 49 UNION** Bicycle Chains
- 50 - 58 UNION** Gear Hangers
- 59 - 63 UNION** Bicycle Bearings
- 64 - 67 UNION** Disc Brake Pads
- 68 - 69 UNION** Brake Shoes
- 70 - 71 UNION** Cable & Wire
- 72 - 77 UNION** MTB / Trekking Parts

 **UNION®**  **xerama**  **BIKETOOL**

 **SSR Pro** *Selle San Remo*

SANDBLOCK®

AXLE

BR	Boron steel
CM	CrMo steel
T	Titanium

REFLECTOR

BS	Approved
TW	Non-Approved
SI	Screw-in
SO	Snap-on
OB	Snap-on & build-in

BEARING

NCS	Needle+Cartridge System
CCS	Cartridge + Cartridge System
CBS	Cartridge+Bushing System
LBA	Lightweight Ball type, adjustable
BA	Ball type, adjustable
BC	Ball type, classic
NB	Non-Ball type, adjustable
BL	Ball less

BODY

SA	Sand blasting+Anodized color
SD	Sand blasting+ED black
ED	ED black
CNC	Body corner with CNC processed

CAGE

AL	Aluminium
ST	Steel
NL	Nylon
AN	Anodized
BA	Black anodized
BC	Black coated
PC	Powder-coated
CNC	CNC processed

SANDBLOCK®

is the official logo and MARWI's registered trademark of a patented compound of materials to achieve a wear-resistant high quality non-slip pedal tread area. Due to a special, waterproof technology the non-slip inlay cannot be peeled off from the pedal cage.



Features:

- Tread surfaces made of **SANDBLOCK®** connected to the body by a chemical process.
- For the **SANDBLOCK®** non-slip compound a patent is pending.
- The anti-slip function of the **SANDBLOCK®** material outperforms compared to standard sandpaper.
- Standard sandpaper tread area separates very easy from the pedal body, **SANDBLOCK®** **does not!**

SP-880 SBL BLACK

BR LBA BS



Body: PP with SANDBLOCK® non-slip inlay
Size: 118 x 88 mm
Weight: 341 gram/pair

SP-890 / SP-2890 SBL BLACK

BR LBA BS / CM CBS BS



Body: Aluminium with SANDBLOCK® non-slip inlay
Size: 118 x 88 mm
Weight: 506 gram/pair

SP-827 SBL BLACK

BR LBA BS



Body: PP with SANDBLOCK® non-slip inlay
Size: 111 x 90 mm
Weight: 348 gram/pair

SP-827 SBL

BR LBA BS



Body: PP with SANDBLOCK® non-slip inlay
Size: 111 x 90 mm
Weight: 348 gram/pair

SP-828 / SP-2828 SBL GREY

BR LBA ED BS / CM CBS BS



Body: Aluminum with PP and SANDBLOCK® non-slip inlay
Size: 111 x 90 mm
Weight: 494 gram/pair

SP-828 SBL BLACK

BR LBA BS



Body: Aluminum with PP and SANDBLOCK® non-slip inlay
Size: 111 x 90 mm
Weight: 494 gram/pair

SP-1210 BLACK

CM CBS SA



Body: AL-6061 Extrusion T6
Size: 104 × 100mm
Weight: 304 gram/pair

SP-1300 SILVER

CM CBS SA



Body: AL-6061 Extrusion T6
Size: 110 × 100mm
Weight: 416 gram/pair

SP-1400

CM CBS SA



Body: AL-6061 Extrusion T6
Size: 110 × 100 mm
Weight: 414 gram/pair

SP-1080

CM NCS SA



Body: AL-6061 Extrusion T6
Size: 101 × 100mm
Weight: 336 gram/pair



SILVER

ORANGE

XTR GREY



BLUE

GREEN

RED



BLACK

ORANGE

XTR GREY



BLUE

GREEN

RED

SP-1410

CM CBS SA



Body: AL-6061 Extrusion T6
Size: 110 × 100 mm
Weight: 412 gram/pair

SP-1082

CM NCS SA



Body: AL-6061 Extrusion T6
Size: 111 × 100mm
Weight: 334 gram/pair

SP-1090

CM CBS SA



Body: AL-6061 Extrusion T6
Size: 97 × 100mm
Weight: 300 gram/pair

SP-1091

CM CBS SD



Body: One piece aluminium
Size: 97 × 100mm
Weight: 347 gram/pair

SP-2150

CM CBS SD BS SO



Body: One piece aluminium
Size: 99 × 72 mm
Weight: 314 gram/pair

SP-2160

CM CBS SD BS SO



Body: One piece aluminium
Size: 101 × 87mm
Weight: 339 gram/pair

SP-2170

CM CBS ED BS SO



Body: One piece aluminium
Size: 100 × 100 mm
Weight: 403 gram/pair

SP-2309

CM NCS SD BS SO



Body: One piece aluminium
Size: 111 × 100 mm
Weight: 592 gram/pair

SP-1055

CM CBS SA BS SO



Body: AL-6061 Extrusion T6
Size: 100 × 73mm
Weight: 250 gram/pair

SP-2712

CM CBS SA BS SO



Body: AL-6061 Extrusion T6
Size: 90 × 59mm
Weight: 204 gram/pair

SP-2714

CM CBS BS SO



Body: AL-6061 Extrusion T6
Size: 95 × 73mm
Weight: 234 gram/pair

SP-160

BR LBA SD BS SO



Body: One piece aluminium
Size: 107 × 87mm
Weight: 348 gram/pair

SP-2600

CM CBS SD CNC BS SO



Body: One piece aluminium & CNC side
Size: 102 × 78mm
Weight: 290 gram/pair

SP-2661

CM CBS BS SI or SO

AL BA



Body: Aluminium with cage
Size: 102 × 76mm
Weight: 250 gram/pair

SP-170

BR LBA BS SO

NEW



Body: One piece aluminium
Size: 100 × 100mm
Weight: 403 gram/pair

SP-2612

BR LBA BS SI or SO

AL BA



Body: Aluminium with cage
Size: 107 × 81mm
Weight: 283 gram/pair

SP-2662

BR LBA BS SI or SO

AL BA



Body: Aluminium with cage
Size: 102 × 76mm
Weight: 272 gram/pair

SP-2672

BR LBA BS SI or SO

AL BA



Body: Aluminium with cage
Size: 88 × 76mm
Weight: 245 gram/pair

SP-1092

BR LBA SD



Body: One piece aluminium
Size: 97 × 100mm
Weight: 350 gram/pair

SP-600

BR LBA SD CNC BS SO



Body: One piece aluminium & CNC side
Size: 102 × 78mm
Weight: 274 gram/pair

SP-610 BLACK

BR BA **SD** BS or TW SO



Body: One piece aluminium
Size: 105 × 81mm
Weight: 374 gram/pair

SP-120

BR BA BS or TW SO



Body: One piece aluminium
(different color options)
Size: 110 × 100mm
Weight: 470 gram/pair

SP-102

BR BA BS SO



Body: One piece aluminium
(different color options)
Size: 108 × 102mm
Weight: 434 gram/pair

SP-108

BR BA BS or TW SO



Body: One piece aluminium
Size: 111 × 115mm
Weight: 518 gram/pair

SP-309

BR BA **SD**



Body: One piece aluminium
Size: 113 × 100 mm
Weight: 570 gram/pair

SP-311

BR BA BS SI or SO

ST PC or AL AN



Body: Aluminium with cage
Size: 102 × 63mm
Weight: 360 gram/pair

SP-910

BR BA BS SI or SO

ST PC or AL AN



Body: Aluminium with cage
Size: 102 × 63mm
Weight: 370 gram/pair

SP-931

BR BA BS SI or SO

ST PC or AL AN



Body: PP
Size: 102 × 79mm
Weight: 316 gram/pair

SP-931T

BR BA BS SI or SO

ST PC or AL AN



Body: PP
Size: 102 × 79mm
Weight: 316 gram/pair

SP-151

BR BA BS

NL



Function:	foldable to both sides
Body:	Aluminium body/Nylon cage
Size:	110 × 70mm
Weight:	425 gram/pair

SP-153

BR BA BS

NL



Function:	foldable to both sides
Body:	Aluminium body/Nylon cage with non-slip inlay
Size:	110 × 70mm
Weight:	470 gram/pair

SP-157

CM CBS BS

NL



Function:	foldable to both sides
Body:	Aluminum body/Nylon cage with SANDBLOCK® non-slip inlay
Size:	113.2 × 88.2mm
Weight:	462 gram/pair

SP-823

BR LBA BS



Body: Aluminium with PP and non-slip inlay
Size: 103 x 78 x 26mm
Weight: 291 gram/pair

SP-821

BR LBA BS



Body: Aluminium with PP and non-slip inlay
Size: 104 x 82 x 26mm
Weight: 316 gram/pair

SP-828

BR LBA BS



Body: Aluminium with PP and non-slip inlay
Size: 111 x 90mm
Weight: 516 gram/pair

SP-2823 BLACK

CM CBS ED BS



Body: Aluminium with PP and non-slip inlay
Size: 104 x 78 x 26mm
Weight: 280 gram/pair

SP-2821 BLACK

CM CBS ED BS



Body: Aluminium with PP and non-slip inlay
Size: 104 x 82 x 26mm
Weight: 320 gram/pair

SP-2828 BLACK

CM CBS ED BS



Body: Aluminium with PP and non-slip inlay
Size: 111 x 90mm
Weight: 504 gram/pair

SP-2180

CM CBS BS or TW



Body: Aluminium with non-slip inlay
Size: 100 x 95 x 25mm
Weight: 457 gram/pair

SP-180

BR LBA BS or TW



Body: Aluminium with non-slip inlay
Size: 100 x 95 x 25mm
Weight: 457 gram/pair

SP-824

BR BA BS



Body: Aluminium with PP and non-slip inlay
Size: 110 x 82 x 29 mm
Weight: 412 gram/pair

SP-812

BR BA BS or TW



Body: Aluminium with PP and non-slip inlay
Size: 112 × 81 × 29mm
Weight: 495 gram/pair

SP-810

BR BA BS or TW



Body: Aluminium with non-slip inlay
Size: 103 × 69mm
Weight: 541 gram/pair

SP-2811

CM CBS BS



Body: Aluminium with non-slip inlay
Size: 108 × 69mm
Weight: 376 gram/pair

SP-811

BR BA BS or TW



Body: Aluminium with non-slip inlay
Size: 108 × 69mm
Weight: 398 gram/pair

SP-813

BR BA BS or TW



Body: PP with non-slip inlay
Size: 110 × 69mm
Weight: 290 gram/pair

SP-820

BR LBA BS or TW



Body: PP with non-slip inlay
Size: 104 × 82 × 26mm
Weight: 280 gram/pair

SP-827

BR LBA BS or TW



Body: PP with non-slip inlay
Size: 109 × 90mm
Weight: 364 gram/pair

SP-807

BR BA BS or TW



Body: PP (black or grey) with non-slip inlay (grey or black)
Size: 108 × 74mm
Weight: 366 gram/pair

SP-808

BR BA BS or TW



Body: PP (black or grey) with non-slip inlay (grey or black)
Size: 108 × 78mm
Weight: 368 gram/pair

SP-809

BR BA BS or TW



Body: PP (black) with non-slip inlay (grey)
Size: 108 × 78mm
Weight: 370 gram/pair

SP-868

BR BA BS or TW



Body: Aluminium with PVC
Size: 108 × 69mm
Weight: 500 gram/pair

SP-872N

BR BA or NB or BL
 BS or TW



Body: PP
Size: 109 × 91mm
Weight: 286 gram/pair

SP-875

BR BA or NB
 BS or TW



Body: PP
Size: 108 × 84mm
Weight: 292 gram/pair

SP-877

BR BA or NB or BL
 BS or TW



Body: PP
Size: 110 × 79mm
Weight: 318 gram/pair

SP-878

BR BA or NB or BL
 BS or TW



Body: PP
Size: 109 × 91mm
Weight: 298 gram/pair

SP-698

BR BA or BL BS or TW



Body: PP
Size: 114 × 83mm
Weight: 279 gram/pair

SP-202

BR BA BS or TW



Body: PP
Size: 104 × 90mm
Weight: 324 gram/pair

SP-300

BR BA or BL BS or TW



Body: PP
Size: 108 × 69mm
Weight: 322 gram/pair

SP-301

BR BA BS or TW



Body:	PP
Size:	113 x 74mm
Weight:	324 gram/pair

SP-305

BR BA BS or TW



Body:	PP
Size:	108 x 69mm
Weight:	284 gram/pair

SP-460

BR BA BS or TW



Body:	PP
Size:	110 x 100mm
Weight:	305 gram/pair

SP-450

BR BA BS or TW



Body:	PP
Size:	110 x 100mm
Weight:	330 gram/pair

SP-420

CM LBA BS



Body:	Nylon + 30% Glass Fiber
Size:	110 x 100mm
Weight:	338 gram/pair

SP-410

BR BA or NB

BS or TW



Body:	PP
Size:	112 x 100mm
Weight:	352 gram/pair

SP-400

BR BA BS or TW



Body:	PP
Size:	110 x 100mm
Weight:	336 gram/pair

SP-420 COLOR

CM LBA BS



Body:	Nylon + 30% Glass Fiber (different color options)
Size:	110 x 100mm
Weight:	338 gram/pair

SP-700

BR BA or BL

BS or TW



Body:	PP
Size:	111 x 86mm
Weight:	325 gram/pair

SP-767

BR BA or BL
BS or TW



Body: PP
Size: 113 x 87mm
Weight: 337 gram/pair

SP-320

BR BA
BS or TW



Body: PP
Size: 125 x 78mm
Weight: 386 gram/pair

SP-201

BR BA BS or TW



Body: PP
Size: 87 x 70mm
Weight: 267 gram/pair

SP-481

BR BA or NB or BL
BS or TW



Body: PP
Size: 98 x 64mm
Weight: 278 gram/pair

SP-834

BR BA BS or TW



Body: PP with non-slip inlay(grey)
Size: 97 x 72mm
Weight: 332 gram/pair

SP-835

BR BA BS or TW



Body: PP with non-slip inlay(grey)
with additional side reflector
Size: 97 x 72mm
Weight: 334 gram/pair

SP-690

BR BA or NB or BL
BS or TW



Body: PP
Size: 95 x 64mm
Weight: 271 gram/pair

SP-695K

BR BA or NB or BL
BS or TW



Body: PP (optional w/o reflector)
Size: 91 x 65mm
Weight: 270 gram/pair

SP-698K

BR BA or BL
BS or TW



Body: PP
Size: 98 x 68mm
Weight: 248 gram/pair

SP-687H

BR BC BS or TW



Body: steel (galvanized) & PVC mixture
Size: 117 × 76mm
Weight: 572 gram/pair

SP-685H

BR BC BS or TW



Body: steel (galvanized) & PVC mixture
Size: 118 × 79mm
Weight: 562 gram/pair

SP-689

BR BC BS



Body: steel (galvanized) & PVC mixture
Size: 118 × 63mm
Weight: 540 gram/pair

SP-687H WHITE

BR BC BS or TW



Body: steel (galvanized) & PVC mixture
Size: 117 × 76mm
Weight: 572 gram/pair

SP-685H WHITE

BR BC BS or TW



Body: steel (galvanized) & PVC mixture
Size: 118 × 79mm
Weight: 562 gram/pair

SP-689 WHITE

BR BC BS



Body: steel (galvanized) & PVC mixture
Size: 118 × 63mm
Weight: 540 gram/pair

261

BR BC



Body: steel (galvanized) & PVC mixture
Size: 122 × 58mm
Weight: 625 gram/pair

265H

BR BC



Body: steel (galvanized) & PVC mixture
Size: 118 × 72mm
Weight: 560 gram/pair

SP-689 BROWN

BR BC BS



Body: steel (galvanized) & PVC mixture
Size: 118 × 63mm
Weight: 540 gram/pair

SP-308

BR CCS SD BS SO



Body: One piece aluminium
Size: 114 × 109 mm
Weight: 635 gram/pair

SP-5200

CM NCS

NEW



Dual-Function Fitness pedal

Body: Aluminium
Size: 117 × 98mm
Weight: 614(standard) gram/pair
 714(Heavy Duty) gram/pair
Cleat: UM-1 included, Shimano 51 compatible

SP-5300

CM NCS

NEW



Clipless low profile RACE pedal, for use in combination with innovative URK cleats

Body: Aluminium
Size: 95 × 97 mm
Weight: 560(Heavy Duty) gram/pair
Cleat: URK-6 included, LOOK KEO compatible



NEW

FOIA

FB CB VU ES EBR

Top: PU
Base: black PP + Glass fiber
Size: 255 × 220 mm
Weight: 665 gram/pair

SP-250

BR BA



With horizontal balance weight

Function: non slip home trainer pedal

Body: PP with non-slip inlay (grey)

Size: 137 × 123mm

Weight: 660 gram/pair

SP-240

BR BA



With horizontal balance weight

Function: home trainer pedal

Body: PP

Size: 137 × 123mm

Weight: 640 gram/pair

SP-260

BR BA



With horizontal balance weight

Function: non slip home trainer pedal

Body: PP with non-slip inlay

Size: 155 × 142mm

Weight: 1200 gram/pair

NEW

MT-1



• For use with straps

Function: MTB/ATB toe clip

Material: nylon

MT-2



• For strapless use

Function: MTB/ATB toe clip

Material: nylon

MT-11



• For use with straps

Function: MTB/ATB toe clip

Material: nylon

Reflector: integrated (approved, screw-in)

MT-13



• For use with straps

Function: Road/Trekking toe clip

Material: PP

Reflector: integrated (approved, screw-in)

MT-14



• For strapless use

Function: Road /MTB/Trekking toe clip

Material: PP

Reflector: integrated (approved, screw-in)

STRAP-N



Function: for use with MT-11 or MT-1 toe clip

Material: PP woven

Size: 12.5 × 450mm

SP-5600

CM or T CBS



Clipless low profile "mud free" MTB pedal

Body: Aluminium, black coated
Size: 81 × 65mm
Weight: 298 (CrMo) gram/pair
 254 (Titanium) gram/pair
Cleat: UM-1 inclusive, Shimano 51 compatible

SP-5600 RED

CM or T CBS



Clipless low profile "mud" MTB pedal

Body: Aluminium, red coated
 option: white coated
Size: 81 × 65mm
Weight: 298 (CrMo) gram/pair
 254 (Titanium) gram/pair
Cleat: UM-1 inclusive, Shimano 51 compatible

SP-5650

CM LBA



Clipless low profile "mud free" MTB pedal

Body: Aluminium, black coated
Size: 82 × 59mm
Weight: 334 gram/pair
Cleat: UM-1 inclusive, Shimano 51 compatible

SP-5400

CM CBS



Clipless RACE pedal

Body: Aluminium, polished
Size: 80 × 65mm
Weight: 310 gram/pair
Cleat: UM-1 inclusive, Shimano 51 compatible

SP-5500

CM CBS



Dual-Function Trekking-Bike pedal

Body: Aluminium, silver coated
Size: 85 × 84mm
Weight: 352 gram/pair
Cleat: UM-1 inclusive, Shimano 51 compatible

SP-5750

CM LBA



Clipless low profile RACE pedal

Body: Aluminium, silver coated
Size: 84 × 91mm
Weight: 294 gram/pair
Cleat: UR-5 (Look ARC compatible) inclusive

SP-5700

CM or T CBS



Clipless low profile RACE pedal

Body: Aluminium, high polished
Size: 80 × 92mm
Weight: 294 (CrMo) gram/pair
 250 (Titanium) gram/pair
Cleat: UR-5 (Look ARC compatible) inclusive

SP-5700K

CM or T CBS



Clipless low profile RACE pedal, for use in combination with innovative URK cleats

Body: Aluminium, silver coated
Size: 78 × 91mm
Weight: 326 (CrMo) gram/pair
 282 (Titanium) gram/pair
Cleat: URK-6 (Look KEO compatible) inclusive

SP-5700K BLACK

CM or T CBS



Clipless low profile RACE pedal, for use in combination with innovative URK cleats

Body: Aluminium, black coated
 option: white or red coated
Size: 78 × 91mm
Weight: 326 (CrMo) gram/pair
 282 (Titanium) gram/pair
Cleat: URK-6 (Look KEO compatible) inclusive

SP-5800

CM CBS BS AL BA



Dual-Function Trekking-Bike pedal, with "non slip" elastomer tread

Body: Aluminium, ball polished

Size: 101 × 65mm

Weight: 354 gram/pair

Cleat: UM-1 inclusive, Shimano 51 compatible

SP-5850

CM LBA BS AL BA



Dual-Function Trekking-Bike pedal, with "non slip" elastomer tread

Body: Aluminium, ball polished

Size: 102 × 65mm

Weight: 372 gram/pair

Cleat: UM-1 inclusive, Shimano 51 compatible

SP-5900

CM CBS AL BA



Dual-Function MTB pedal, with reinforced axle and bearings

Body: Aluminium, ball polished

Size: 105 × 65mm

Weight: 446 gram/pair

Cleat: UM-1 inclusive, Shimano 51 compatible

UM1



- MTB cleat, black coated, with improved mud clearance
- Shimano 51 compatible
- 4° lateral float
- Set with 2 cleats / 2 washers / 4 screws

Material: CrMo (SCM-415)

Weight: 54 gram/set

UR5



- Racing cleat, "float", red
- Look "ARC" compatible
- 9° lateral float
- Set with 2 cleats / 6 washers / 6 screws

Material: reinforced Nylon

Weight: 88 gram/set

UR6



- Racing cleat, black
- Look "ARC" compatible
- 3° lateral float
- Set with 2 cleats / 6 washers / 6 screws

Material: reinforced Nylon

Weight: 88 gram/set

URK-0



- Racing cleat, Look KEO compatible
- Fix, (0° lateral float) / black
- Set with 2 cleats / 6 washers / 6 screws

Material: reinforced Nylon & TPR

Weight: 52 gram/set

URK-6



- Racing cleat, Look KEO compatible
- 6° lateral float / red
- Set with 2 cleats / 6 washers / 6 screws

Material: reinforced Nylon & TPR

Weight: 52 gram/set

URK-9



- Racing cleat, Look KEO compatible
- 9° lateral float / gray
- Set with 2 cleats / 6 washers / 6 screws

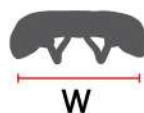
Material: reinforced Nylon & TPR

Weight: 52 gram/set

BIKE

CB Commuter bike
EB E-bike
KID Kids bike

ATB ATB
MTB MTB
RB Road bike



VIENNA

EB CB VU ES EBR

Top:	PU
Base:	black PP + Glass fiber
Size:	252 × 222mm
Weight:	519 (steel) gram/pc



LINDAU

EB CB VU EBR

Top:	PU
Base:	black PP
Size:	258 × 190mm
Weight:	443 (steel) gram/pc



LUGANO

EB CB VU ES EBR

Top:	PU
Base:	black Nylon + Glass fiber
Size:	255 × 231mm
Weight:	896 (steel) gram/pc



MONACO

EB CB VU ES EBR

Top:	PU
Base:	black PP + Glass fiber
Size:	255 × 220mm
Weight:	720 (steel) gram/pc



VERONA

EB CB VU EBR

Top:	PU
Base:	black PP
Size:	265 × 200mm
Weight:	450 (steel) gram/pc



VARESE

EB CB VU GEL EBR

Top:	PU
Base:	black PP
Size:	265 × 200mm
Weight:	450 (steel) gram/pc



DONAU

CB HD EBR

Top:	PU
Base:	black PP + Glass fiber
Size:	258 × 186mm
Weight:	439 (steel) gram/pc



MOSEL

CB HD EBR

Top:	PU
Base:	black PP + Glass fiber
Size:	280 × 171mm
Weight:	395 (steel) gram/pc



FOAM | **GEL** w / Gel inlay
HD High density foam
HR High Resilience foam padded
VU Vacuum

RAIL | **SR** Ø7mm steel rail
ES Elastomer
SPS Spring w / safety cover

ST Satin steel rail
EBR ED black steel rail

CLAMP | **CS** Clamp set

MÂCON

EB **CB** **VU** **EBR**

Top: PU
Base: black PP + Glass fiber
Size: 275 × 162mm
Packing: 20 pcs./carton
 Brown cover available



LIÈGE

EB **CB** **VU** **EBR**

Top: PU
Base: black PP + Glass fiber
Size: 257 × 215mm
Packing: 20 pcs./carton
 Brown cover available



ZURIGO

EB **CB** **VU** **EBR**

Top: PU
Base: black PP
Size: 260 × 210mm
Packing: 20 pcs./carton



TORINO

ATB **MTB** **VU** **EBR**

Top: PU
Base: black Nylon + Glass fiber
Size: 270 × 170mm
Packing: 420 (steel) gram/pc



TAUNUS

ATB **MTB** **HD** **EBR**

Top: PU
Base: black PP
Size: 249 × 157mm
Weight: 422 (steel) gram/pc



3220

CB **HR** **SR** **SPS** **CS**

Top: Vinyl (3220)
Base: black PP
Size: 252 × 225mm
Packing: 20 pcs./carton
 Brown cover available



3240

CB **HR** **SR** **ES** **CS**

Top: Vinyl (3240)
Base: black PP
Size: 251 × 219mm
Packing: 20 pcs./carton
 Brown cover available



3250

CB **HR** **SR** **ES** **CS**

Top: Vinyl
Base: black PP
Size: 252 × 220mm
Packing: 20 pcs./carton



3110

ATB **MTB** **HR** **SR** **CS**

Top: Vinyl
Base: black PP
Size: 260 × 160mm
Packing: 20 pcs./carton



3130

ATB **MTB** **HR** **SR** **CS**

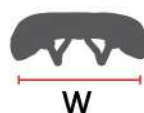
Top: Vinyl
Base: black PP
Size: 266 × 148mm
Packing: 20 pcs./carton



BIKE

ATB	ATB
MTB	MTB
RB	Road bike
LB	Lady bike

DB	Downhill bike
CB	Commuter bike
ORB	Off road bike
EB	E-bike



VENTOUX

RB SL /CNT

Top:	PU + Micro fiber
Base:	black Nylon + Glass fiber
Size:	285 × 125mm
Weight:	199(CrNi/Ti) gram/pc



VENTOUX WHITE

RB SL /CNT

Top:	PU + Micro fiber
Base:	black Nylon + Glass fiber
Size:	285 × 125mm
Weight:	199(CrNi/Ti) gram/pc



TOURMALET

RB MTB SL /CNT

Top:	PU + Micro fiber
Base:	black Nylon + Glass fiber
Size:	280 × 130mm
Weight:	234(CrNi/Ti) gram/pc



TOURMALET WHITE

RB MTB SL /CNT

Top:	PU + Micro fiber
Base:	black Nylon + Glass fiber
Size:	280 × 130mm
Weight:	234(CrNi/Ti) gram/pc



POGGIO

RB MTB SL /CNT

Top:	PU + Micro fiber
Base:	black Nylon + Glass fiber
Size:	290 × 135mm
Weight:	225(CrNi/Ti) gram/pc



POGGIO WHITE

RB MTB SL /CNT

Top:	PU + Micro fiber
Base:	black Nylon + Glass fiber
Size:	290 × 135mm
Weight:	225(CrNi/Ti) gram/pc



ARIZONA

RB MTB HD /S-CM

Top:	PU
Base:	black Nylon + Glass fiber
Size:	278 × 135mm
Weight:	284(CrMo) gram/pc



ARIZONA WHITE

RB MTB HD /S-CM

Top:	PU
Base:	black Nylon + Glass fiber
Size:	278 × 135mm
Weight:	284(CrMo) gram/pc



FOAM

SL Super-Light foam
HD High density foam

GEL w / Gel inlay
VU Vacuum

RAIL

CNT CrNi/Ti rail
T-CM Two toned CrMo rail
S-CM Satin CrMo rail

ST Satin steel rail
EBR ED black steel rail

MODANE

RB MTB HD S-CM

Top: PU
Base: black Nylon + Glass fiber
Size: 290 × 135mm
Weight: 285(CrMo) gram/pc



MODANE WHITE

RB MTB HD S-CM

Top: PU
Base: black Nylon + Glass fiber
Size: 290 × 135mm
Weight: 285(CrMo) gram/pc



BRAVURA

MTB HD S-CM

Top: PU
Base: black Nylon + Glass fiber
Size: 280 × 135mm
Weight: 280(CrMo) gram/pc



BRAVURA WHITE

MTB HD S-CM

Top: PU
Base: black Nylon + Glass fiber
Size: 280 × 135mm
Weight: 280(CrMo) gram/pc



ABRUZZO

MTB HD S-CM

Top: PU
Base: black Nylon + Glass fiber
Size: 280 × 136mm
Weight: 320(CrMo) gram/pc



ABRUZZO WHITE

MTB HD S-CM

Top: PU
Base: black Nylon + Glass fiber
Size: 280 × 136mm
Weight: 320(CrMo) gram/pc



ARDÈCHE

RB MTB HD ST

Top: Vinyl
Base: black Nylon + Glass fiber
Size: 278 × 135mm
Weight: 354(steel) gram/pc



PIEMONTE

MTB HD ST

Top: Vinyl
Base: black Nylon + Glass fiber
Size: 280 × 136mm
Weight: 360(steel) gram/pc



JURA

MTB HD ST

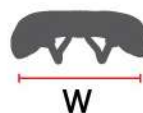
Top: Vinyl
Base: black Nylon + Glass fiber
Size: 280 × 135mm
Weight: 320(steel) gram/pc



BIKE

ATB	ATB
MTB	MTB
RB	Road bike
LB	Lady bike

DB	Downhill bike
CB	Commuter bike
ORB	Off road bike
EB	E-bike



3438

RB SL CNT

Top:	Micro fiber leather
Size:	285 × 125mm
Weight:	199 (CrNi/Ti) gram/pc



3436B

ATB RB HD S-CM

Top:	PU leather
Size:	295 × 150 mm
Weight:	374 (CrMo) gram/pc



3432

ATB RB SL CNT

Top:	<ul style="list-style-type: none"> Micro fiber leather + Kevlar black High Frequency & hot sealed design
Size:	275 × 130mm
Weight:	234 (CrNi/Ti) gram/pc



3430

DB ORB HD S-CM

Top:	<ul style="list-style-type: none"> Vinyl white High Frequency design
Size:	280 × 130mm
Weight:	309 (CrMo) gram/pc



3428

RB HD ST

Top:	PU leather
Size:	293 × 135mm
Weight:	329 (steel) gram/pc



3426

ATB RB HD S-CM

Top:	<ul style="list-style-type: none"> Kevlar black w/embroidery logo With anatomic hole design
Size:	275 × 135mm
Weight:	304 (CrMo) gram/pc



3426A

ATB RB T-CM

Top:	<ul style="list-style-type: none"> Micro fiber leather With Frequency & sealed design With anatomic hole design
Size:	275 × 135mm
Weight:	247 (CrMo) gram/pc



3426C

ATB RB HD S-CM

Top:	Micro fiber leather
Size:	278 × 135mm
Weight:	284 (CrMo) gram/pc



3851

RB ATB VU ST EBR

Top:	<ul style="list-style-type: none"> Environmental friendly TPU With Frequency & sealed design
Size:	245 × 145mm
Weight:	336 (steel) gram/pc



GALIBIER

RB MTB VU CNT or S-CM or EBR

Top:	PU
Base:	black Nylon + Glass fiber
Size:	280 × 125mm
Weight:	235 (CrNi/Ti) or 260 (CrMo) or 300 (steel) gram/pc



FOAM

- (SL) Super-Light foam
(HD) High density foam

- (GEL) w / Gel inlay
(VU) Vacuum

RAIL

- (CNT) CrNi/Ti Aluminium rail
(T-CM) Two toned CrMo rail
(S-CM) Satin CrMo rail

- (ST) Satin steel rail
(EBR) ED black steel rail

3178

ATB (HD) S-CM

Top:	Micro fiber leather
Size:	274 × 135mm
Weight:	280 (CrMo) gram/pc



3170G

ATB (HD) ST

Top:	Vinyl
Size:	280 × 136 mm
Weight:	352 (steel) gram/pc



3142

MTB (HD) EBR

Top:	Vinyl
Size:	246 × 150 mm
Weight:	330 (ED BK steel) gram/pc



3132

MTB (HD) EBR

Top:	Vinyl
Size:	275 × 143 mm
Weight:	338 (ED BK steel) gram/pc



SC-50

Aluminium seat clamp

Material:	cold forged AL 6061, T6
Diameter:	ø 28.6 / 31.8 / 34.9mm
Color:	black or silver
Weight:	20 gram



SC-55

Aluminium seat clamp, with stainless steel screw

Material:	cold forged AL 6061, T6
Diameter:	ø 31.8 / 34.9mm
Color:	black or silver
Weight:	32 gram



SC-60

Aluminium seat clamp, with stainless steel screw

Material:	cold forged AL 6061, T6
Diameter:	ø 28.6 / 31.8 / 34.9mm
Color:	black
Weight:	21 gram



SC-65

Aluminium seat clamp, with stainless steel screw

Material:	cold forged AL 6061, T6
Diameter:	ø 31.8 / 34.9mm
Color:	black or silver
Weight:	26 gram



SC-70QR

Aluminium seat clamp, with quick release bolt

Material:	cold forged AL 6061, T6
Diameter:	ø 28.6 / 31.8 / 34.9mm
Color:	black or silver
Weight:	51 gram

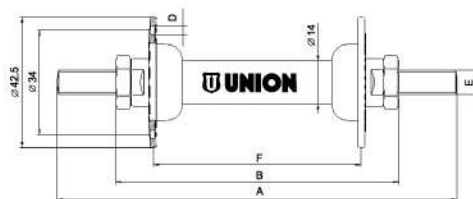


QR-650

Aluminium Quick Release

Material:	AL 6061 lever and nut, Cr-Mo skewer
Length:	50mm
Color:	black or silver
Weight:	39 gram

410

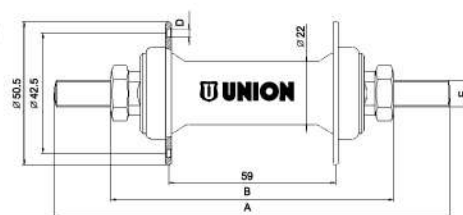


Front hub type	Weight (gram)	Number of spoke holes	A Axle length (Mm)	B Over lock nut dimension (Mm)	Free axle end Right + left (Mm)	D Spoke hole Diameter (Mm)	E Axle thread	F Flange distance (Mm)
w/o nuts								
410-01	153	16	120	80	20	2.8 +/-0.1	5/16" x 26TPI	56.5
410-02	166	16	130	92	19	2.8 +/-0.1	5/16" x 26TPI	56.5
410-03	164	16	130	92	19	2.8 +/-0.1	5/16" x 26TPI	67.5
410-04	163	20	130	92	19	2.8 +/-0.1	5/16" x 26TPI	67.5
410-05	160	36	130	92	19	2.8 +/-0.1	5/16" x 26TPI	67.5
410-06	162	28	130	92	19	2.8 +/-0.1	5/16" x 26TPI	67.5
412-01	195	36	140	100	20	2.8 +/-0.1	3/8" x 26TPI	67.5

420

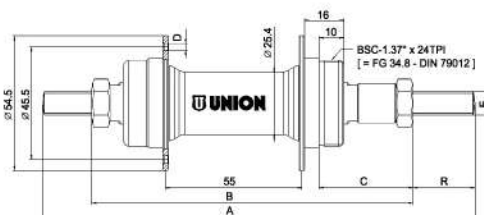


420QR



Front hub type	Weight (gram)	Number of spoke holes	A Axle length (mm)	B Over lock nut dimension (mm)	Free axle end right + left (mm)	D Spoke hole diameter (mm)	E Axle thread	F Flange distance (mm)
420-01	248	36	140	100	20	2.8 +/-0.1	3/8" x 26TPI	59
420-01 QR	267	36	108	100	4	2.8 +/-0.1	3/8" x 26TPI	59

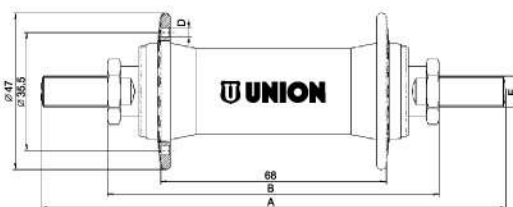
463



All STEEL hubs also available in black

Rear hub type	Weight (gram)	Number of spoke holes	A Axle length (mm)	B Over lock nut dimension (mm)	C Sprocket clearance (mm)	R Free Axle right (mm)	D Spoke hole diameter (mm)	E Axle thread
463-7	370	36	175	130	38	25	2.8 +/-0.1	3/8" x 26TPI
463-7 CrMo	370	36	175	130	38	25	2.8 +/-0.1	3/8" x 26TPI
463-8	372	36	180	135	40	25	2.8 +/-0.1	3/8" x 26TPI
463-8 CrMo	372	36	180	135	40	25	2.8 +/-0.1	3/8" x 26TPI

512



512QR



Rubber cap



Safety washer



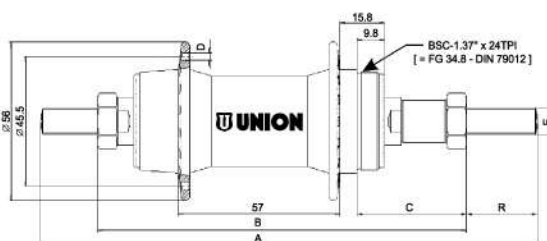
Flange nut



Cap nut 17mm total height

Front hub type	Weight (gram)	Number of spoke holes	A Axle length (mm)	B Over lock nut dimension (mm)	Free axle right (mm)	D Spoke hole diameter (mm)	E Axle thread
512	w/o nuts 176	36	140	100	20	2.9 +/-0.1	3/8" x 26TPI
512 QR	with QR 188	36	108	100	4	2.9 +/-0.1	M9 x 1

562



562QR



Rubber cap



Flange nut



Cap nut 21mm total height

All ALUMINIUM hubs also available in black (anodized)

Rear hub type	Weight (gram)	Number of spoke holes	A Axle length (mm)	B Over lock nut dimension (mm)	C Sprocket clearance (mm)	R Free axle right (mm)	D Spoke hole diameter (mm)	E Axle thread
562-7	w/o nuts 286	36	175	130	38	25	2.9+/-0.1	3/8" x 26TPI
562-8	291	36	180	135	40	25	2.9+/-0.1	3/8" x 26TPI
562-7 QR	with QR 301	36	140	130	38	5	2.9+/-0.1	M10 x 1
562-8 QR	311	36	145	135	40	5	2.9+/-0.1	M10 x 1

E-Bike Lights

UN-4200E EXTREME E-BIKE

- For use at EPAC (E-Bike) at a Voltage between 6V to 48V DC
- Front light with 1 x LED white
- 80 Lux performance
- Aluminium heat sink in U-shape
- 1+1 INPUT terminal lugs
- Mounting at the front fork, bracket stainless steel

~ K 1738
IA (E1) 024913



UN-4270E SPARK E-BIKE

- For use at EPAC (E-Bike) at a Voltage between 6V to 44V DC
- Front light with 1 x LED white
- 50 Lux performance
- 1+1 INPUT terminal lugs
- Mounting at the front fork, bracket stainless steel

~ K 1598
IA (E1) 024913



UN-4250E VENTI E-BIKE

- For use at EPAC (E-Bike) at a Voltage between 6V to 44V DC
- Front light with 1 x LED white
- 20 Lux performance
- 1+1 INPUT terminal lugs
- Mounting at the front fork, bracket stainless steel

~ K 990
IA (E1) 023716



UN-4930E RETRO 40 E-BIKE

- For use at EPAC (E-Bike) at a Voltage between 6V to 44V DC
- Classic front light with 1 x LED white
- 40 Lux performance
- 1+1 INPUT terminal lugs
- Mounting at the front fork, bracket stainless steel

~ K 1123
IA (E1) 024005



UN-4990E CLASSICO E-BIKE

- For use at EPAC (E-Bike) at a Voltage between 6V to 48V DC
- Classic front light with 1 x LED white
- 30 Lux performance
- 1+1 INPUT terminal lugs
- Mounting at the front fork, bracket stainless steel

~ K 1657
IA (E1) 024592



UN-4370E

- For use at EPAC (E-Bike) at a Voltage between 6V to 15V DC
- 1 bright red LED and light bar for high luminosity
- Extra wide radiation to the sides >220°
- Transparent lens and durable ABS housing
- 1+1 INPUT terminal lugs
- Base with stainless steel M5 bolt, washer and lock nut



~ K 1326
IA (E1) 024515

UN-4350E

- For use at EPAC (E-Bike) at a Voltage between 6V to 15V DC
- 1 bright red LED and light bar for high luminosity
- Extra wide radiation to the sides >220°
- Transparent lens and durable ABS housing
- 1+1 INPUT terminal lugs
- Base with 2 x M5 bolts, for luggage carrier mounting 50/80 mm
- With stainless steel fasteners



UN-4360E

- For use at EPAC (E-Bike) at a Voltage between 6V to A 15V DC
- 3 red LED and light bar for very bright luminosity
- Extra wide radiation to the sides >220°
- Transparent lens and durable ABS housing
- 1+1 INPUT terminal lugs
- With stainless steel fasteners



~ K 1237
IA (E1) 024302



- Base with 2 x M5 bolts, for flexible luggage carrier mounting 50/80 mm

HB-11

- Nylon bracket with swivel (for M6 bolt use)
- With stainless steel bolts and lock nuts (black)



HA-1

- Nylon adapter for SUNTOUR: CR8, CR85-E25, NCX, NEX, NEX-E25 and for ZOOM
- With stainless steel bolt and lock nut (black)



HA-2

- Nylon adapter for SUNTOUR: MOBI, NCX 32, NEX-E25-C, NVX, XCM-32-ATB, XCR-32-ATB
- With stainless steel bolt and lock nut (black)



HA-6

- Nylon adapter for RST
- With stainless steel bolt and lock nut (black)



Headlights: 6 Volt / 2.4 Watt

UN-4920 RETRO 20

- Classic front light with 1 x LED white
- 20 Lux performance
- For use with side dynamo
- With 2+2 INPUT and OUTPUT terminal lugs
- Mounting on front fork, bracket stainless steel



UN-4925 RETRO 20 ON/OFF

- Like RETRO 20 (UN-4920), with on/off switch
- For use with hub dynamo
- With 2+2 INPUT and OUTPUT terminal lugs



UN-4926 RETRO 20 STEADY

- Like RETRO 20 ON/OFF (UN-4925)
- With "battery free" standlight function

UN-4928 RETRO 20 STEADY SENSOR

- Like RETRO 20 STEADY (UN-4926), with on/auto/off switch
- With automatic ON/OFF mode

UN-4930 RETRO 40

- Classic front light with 1 x LED white
- 40 Lux performance
- For use with side dynamo
- With 2+2 INPUT and OUTPUT terminal lugs
- Mounting on front fork, bracket stainless steel



UN-4935 RETRO 40 ON/OFF

- Like RETRO 40 (UN-4930), with on/off switch
- For use with hub dynamo
- With 2+2 INPUT and OUTPUT terminal lugs

~ K 1123
IA (E1) 024005

UN-4936 RETRO 40 STEADY

- Like RETRO 40 ON/OFF (UN-4935)
- With "battery free" standlight function



UN-4938 RETRO 40 STEADY SENSOR

- Like RETRO 40 STEADY (UN-4936), with on/auto/off switch
- With automatic ON/OFF mode



UN-4965 MOBILE

- Front light with 1 x LED white, and on/off button at the top
- For use with hub dynamo, with fixed twin cable
- Mounting on front fork, bracket stainless steel



UN-4990 CLASSICO

- Classic front light with 1 x LED white
- 30 Lux performance
- For use with side dynamo, with fixed input twin cable
- 1+1 terminal lugs for optional tail light connection
- Mounting at the front fork, bracket stainless steel



UN-4995 CLASSICO ON/OFF

- Like CLASSICO (UN-4990), with on/off switch
- For use with hub dynamo, with fixed input twin cable
- 1+1 terminal lugs for tail light connection



UN-4996 CLASSICO STEADY

- Like CLASSICO ON/OFF (UN-4995)
- With "battery free" stand light function



UN-4965+ MOBILE PLUS

- Front light with 1 x high power LED and on/off button at the top
- 10 Lux performance
- For use with hub dynamo, with fixed twin cable
- Mounting on front fork, bracket stainless steel



UN-4220

- Durable ABS housing
- HALOGEN bulb
- 1+1 plug-on contact for secure twin-cable connection
- Base with serration washer and ground contact



UN-4225

- Like UN-4220, with additional ON-OFF switch for use with hub dynamo
- 1+1 lugs for twin-cable connection to dynamo and 1+1 terminal lugs for taillight connection





~ K 1598
IA (E1) 024913

UN-4275 SPARK ON/OFF

- Front light with 1 x LED white
- 50 Lux performance
- With on/off switch, for use, with hub dynamo
- 2+2 INPUT and OUTPUT terminal lugs
- Mounting at the front fork, bracket stainless steel

UN-4276 SPARK STEADY

- Like SPARK ON/OFF (UN-4275)
- With "battery free" stand light function

UN-4278 SPARK STEADY SENSOR

- Like SPARK STEADY (UN-4276), with on/auto/off switch
- With automatic ON/OFF mode



~ K 1738
IA (E1) 024913

UN-4205 EXTREME ON/OFF

- Front light with 1 x LED white
- 80 Lux performance
- Aluminium heat sink in U-shape
- With on/off switch, for use with hub dynamo
- 2+2 INPUT and OUTPUT terminal lugs
- Mounting at the front fork, bracket stainless steel

UN-4206 EXTREME STEADY

- Like EXTREME ON/OFF (UN-4205)
- With "battery free" stand light function

UN-4208 EXTREME STEADY SENSOR

- Like EXTREME STEADY (UN-4206), with on/auto/off switch
- With "battery free" stand light function

UN-4250 VENTI

- Front light with 1 x LED white
- 20 Lux performance
- For use with side dynamo
- With 1+1 INPUT terminal lugs
- Mounting on front fork, bracket stainless steel



~ K 990
IA (E1) 023716

UN-4255 VENTI ON/OFF

- Like VENTI (UN-4250), with on/off switch
- For use with hub dynamo, with fixed twin cable, 60 cm
- With 1+1 terminal lugs for tail light connection



UN-4256 VENTI STEADY

- Like VENTI ON/OFF (UN-4255)
- With "battery free" stand light function

UN-4258 VENTI STEADY SENSOR

- Like VENTI STEADY (UN-4256), with on/auto/off switch
- With automatic ON/OFF mode

UN-4290 LUPA

- Front light with 1 x LED white
- 30 Lux performance
- For use with side dynamo
- 2+2 INPUT and OUTPUT terminal lugs, for optional tail light connection
- Mounting at the front fork, bracket stainless steel

UN-4295 LUPA ON/OFF

- Like LUPA (UN-4290), with on/off switch
- For use with hub dynamo
- 2+2 INPUT and OUTPUT terminal lugs

UN-4260 HILUX

- Front light with 1 x LED white
- 35 Lux performance
- For use with side dynamo
- With 1+1 INPUT terminal lugs
- Mounting on front fork, bracket stainless steel



~ K 836
IA (E1) 023273

UN-4265 HILUX ON/OFF

- Like HILUX (UN-4260), with on/off switch
- For use with hub dynamo, with fixed twin cable, 60 cm
- With 1+1 terminal lugs for taillight connection



UN-4266 HILUX STEADY

- Like HILUX ON/OFF (UN-4265)
- With "battery free" stand light function

UN-4268 HILUX STEADY SENSOR

- Like HILUX STEADY (UN-4266), with on/auto/off switch
- With automatic ON/OFF mode



~ K 1657
IA (E1) 024592

UN-4296 LUPA STEADY

- Like LUPA ON/OFF (UN-4295)
- With "battery free" stand light function

UN-4298 LUPA STEADY SENSOR

- Like LUPA STEADY (UN-4296) with on/auto/off switch
- With automatic ON/OFF mode

Rear Lights: 6 Volt

UN-4370

- 1 red LED and light bar for bright luminosity
- Extra wide radiation >220°
- Transparent lens and durable ABS housing
- 1+1 INPUT terminal lugs
- Base with stainless steel M5 bolt, washer and lock nut

UN-4375

- Like UN-4370
- With additional "battery free" stand light function, powered by capacitor



~ K 1326 IA (E) 024515

UN-4360

- 3 red LED and light bar for very bright luminosity
- Extra wide radiation to the sides >220°
- Transparent lens and durable ABS housing
- 1+1 INPUT terminal lugs
- Base with 2 x M5 bolts, for luggage carrier mounting 50/80 mm
- With stainless steel fasteners

UN-4365

- Like UN-4360
- With additional "battery free" stand light function, powered by capacitor



~ K 1237 IA (E) 024302

UN-4350

- 1 bright red LED and light bar for high luminosity
- Extra wide radiation to the sides >220°
- Transparent lens and durable ABS housing
- 1+1 INPUT terminal lugs
- Base with 2 x M5 for luggage carrier mounting 50/80 mm
- With stainless steel fasteners

UN-4355

- Like UN-4350
- With additional "battery free" stand light function, powered by capacitor



UN-4340

- 1 bright red LED for extra wide radiation >220°
- Transparent lens
- Durable ABS housing
- 1+1 clamp contact
- Base with 2 x M5 bolt, for luggage carrier mounting 50/80mm

UN-4345

- Like UN-4340
- With additional "battery free" stand light function, powered by capacitor



~ K 694

UN-4320

- 3 red LED for >220° radiation
- Transparent lens
- Durable ABS housing
- 1+1 clamp contact
- Base with M 5 bolt, for easy mudguard mounting

UN-4325

- Like UN-4320
- With additional "battery free" stand light function, powered by capacitor



~ K 693

Dynamos: 6 Volt / 3 Watt

UN-4105

- Efficiency more than 35%
- Release lever for easy operating
- Durable nylon pulley
- 1+1 clamp contact for twin-cable
- Zinc plated bracket with serration washer
- RIGHT- and LEFT- side type
- Maintenance free
- Weight : 147g



~ K 386

UN-4190

- Efficiency more than 35%
- Sintered steel bearings
- Serrated steel pulley
- 1+1 clamp contact for twin-cable
- Zinc plated bracket with serration washer
- RIGHT- and LEFT- side type
- Maintenance free
- Weight : 202g



UN-4125

- Efficiency more than 35%
- Release lever for easy operating
- Durable rubber pulley
- 2+2 plug-on contacts for twin-cable
- Zinc plated bracket + serration washer
- RIGHT- and LEFT- side type available
- Maintenance free
- Weight : 150g



~ K 386

UN-4195

- Efficiency more than 35%
- Sintered steel bearings
- Durable rubber pulley
- 1+1 clamp contact for twin-cable
- Zinc plated bracket + serration washer
- RIGHT- and LEFT- side type available
- Maintenance free
- Weight : 148g



~ K 386

LED Headlights

UN-4980 CLASSICO BATTERY

- Front light with 1 x LED white, with on/off button at the top
- 20 Lux performance
- Batteries : 4 x AAA alkaline, included and assembled
- Mounting at the front fork, bracket stainless steel

~ K 1374
IA (E1) 024592



UN-4280 LUPA BATTERY

- Front light with 1 x LED white, with on/off button at the top
- 20 Lux performance
- Batteries : 4 x AAA alkaline, included and assembled
- Mounting at the front fork, bracket stainless steel

~ K 1374
IA (E1) 024592



UN-4915 RETRO BATTERY

- Classic front light with 1 x LED white
- 20 Lux performance
- With on/off button at the top
- Batteries : 4 x AAA alkaline, included and assembled
- Mounting on front fork, bracket stainless steel

~ K 1122
IA (E1) 024005



UN-4240 VENTI BATTERY

- Front light with 1 x LED white, with on/off button at the top
- 20 Lux performance
- Batteries : 4 x AAA alkaline, included and assembled
- Mounting on front fork, bracket stainless steel



UN-4245 VENTI BATTERY SENSOR

- Like VENTI BATTERY (UN-4240)
- With automatic ON/OFF mode

~ K 1196
IA (E1) 024188

UN-4960 MOBILE BATTERY

- Front light with 1 x LED white and on/off button at the top
- Batteries : 2 x AA alkaline, included and assembled
- Mounting on front fork, bracket stainless steel



black/black



white/white



IA (E1) 023511

UN-4960+ MOBILE PLUS BATTERY

- Front light with 1 x high power LED, with two modes (low / high) by push button at the top
- 10 Lux in high mode / 5 Lux in low mode
- Batteries : 2 x AA alkaline, included and assembled
- Mounting on front fork, bracket stainless steel



black/black



IA (E1) 023511

UN-4900

- Front light with 3 x LED white, with on/off button at the top
- Batteries : 3 x AAA alkaline, included and assembled
- Mounting on handlebar stem bracket
- ABS-housing, available in black and chrome



UN-4900 STAINLESS STEEL & RETRO REFLECTOR

- Like UN-4900, with lamp holder in stainless steel
- With retro reflector in ring design
- ABS-housing, available in black and chrome



UN-4800

- Front light with 1 x LED white and on/off button at the front
- 10 Lux performance
- Batteries : 3 x AAA alkaline, included and assembled
- Mounting at the front fork, bracket stainless steel



UN-4955

- Classic LED front light, downsized
- With on/off button at the top and 1 x high power LED white
- Batteries : 2 x AAA alkaline, included and assembled
- Various mounting opportunities, bracket flange stainless steel



LED rear lights

UN-4470

- 1 red LED and light bar for bright luminosity
- Extra wide radiation $>220^\circ$
- Transparent lens and durable ABS housing
- Batteries: 2 x AAA, included and assembled
- On/off switch at the back side
- Base with M5 bolt
- With stainless steel fasteners

UN-4475

- Like UN-4470, with 1 red LED and light bar
- With automatic ON/OFF mode



~ K 1326
IA (E1) 024515

UN-4460

- 3 red LED and light bar for very bright luminosity
- Extra wide radiation to the sides $>220^\circ$
- Transparent lens and durable ABS housing
- Batteries: 2 x AA, included and assembled
- On/off button at the side
- Base with 2 x M5 bolts, for luggage carrier mounting 50/80 mm
- With stainless steel fasteners



UN-4465

- Like UN-4460, with 3 red LED and light bar
- With automatic ON/OFF mode



~ K 1237
IA (E1) 024302

UN-4450

- 1 bright red LED and light bar for high luminosity
- Extra wide radiation to the sides $>220^\circ$
- Transparent lens and durable ABS housing
- Batteries: 2 x AAA alkaline, included and assembled
- On/off switch at the side
- Base with 2 x M5 for luggage carrier mounting 50/80 mm
- With stainless steel fasteners



UN-4430

- Rear carrier light with 2 x LED red and light bar, with on/off switch at the bottom
- Batteries: 2 x AA alkaline, included and assembled
- Mounting on rear carrier with pitch 80mm (alternative 50mm)
- With stainless steel fasteners



IA (E1) 023409

UN-4420

- Rear carrier light with 3 x LED red, with on/off switch
- Batteries: 2 x AA alkaline, included and assembled
- Mounting on rear carrier with pitch 80mm (alternative 50mm)
- With stainless steel fasteners



IA (E1) 023349

UN-4400

- Rear carrier light with 2 x LED red in SMD technology and additional lenses, with on/off switch
- Batteries: 2 x AA alkaline, included and assembled
- Mounting on rear carrier with pitch 80mm (alternative 50mm)



IA (E1) 024515

UN-4309

- Rear mudguard light with 1 x LED red, with on/off switch at the back side
- Extra water resistant
- Batteries: 2 x AAA alkaline, included and assembled
- Stainless steel fasteners, including lock nut
- Mounting on rear mudguard
- With smoke glass

UN-4307

- Rear mudguard light with 1 x LED red, with on/off switch at the back side
- Extra water resistant
- Batteries: 2 x AAA alkaline, included and assembled
- Stainless steel fasteners, including lock nut
- Mounting on rear mudguard
- With smoke glass



IA (E1) 023408

Li-Ion Battery Lights



UN-100 **

- Front light LED
- Direct USB adapter
- Steady + flash
- Burning time 2.5 HRS

**Also available in a set as UN-102



UN-101 **

- Tail light LED
- Direct USB adapter
- Steady + flash
- Burning time 2.5 HRS



UN-120

- Tail light LED (2 x LED)
- Incl. micro USB charging cable
- Steady + flash
- Adjustable rubber quick release
- Burning time 6 HRS



UN-130

- Tail light LED (2 x LED)
- Incl. USB 2.0 charging cable
- Bracket system with finger screw
- Steady + flash + steady 50%
- Burning time 4 HRS



UN-150

- Front light LED
- 2 x LED (2 LUX)
- Incl. micro USB charging cable
- Steady + flash
- Adjustable rubber quick release
- Burning time 6 HRS



UN-160

- Front light LED
- 2 x LED (4 LUX)
- Incl. USB 2.0 charging cable
- Bracket system with finger screw
- Black version with handlebar and V-brake bracket
- Steady + flash + steady 50%
- Burning time 4 HRS



UN-170

- Front light LED
- 1 x LED (30 LUX)
- Incl. USB 2.0 charging cable
- Bracket system with finger screw
- With handlebar and V-brake bracket
- Steady + flash + steady 50%
- Burning time 4 HRS



UN-200 25 LUX USB HEADLIGHT **

- Rechargeable Li-Ion battery (3.7V, 500mAh)
- Incl. USB 2.0 charging cable
- Low-battery indicator
- USB charging port protected against splash and rainwater by a rubber cap
- Incl. adjustable rubber handlebar bracket that fits all handlebars
- Steady 100% + Steady 50 %
- Lightweight : 46 gram
- Approved according StVZO regulation
- 25 LUX light intensity, luminous range 90 meter
- Burning time 4 HRS
- Charging time of 1,5 hours



UN-220



UN-210 USB TAILLIGHT **

- Rechargeable Li-Ion battery (3.7V, 150mAh)
- Incl. USB 2.0 charging cable
- Low-battery indicator
- USB charging port protected against splash-and rainwater by replaceable rubber seat post adapter
- Incl. adjustable rubber seat post adapter that fits most seat posts
- Steady 100%
- Lightweight : 41 gram
- Approved according StVZO regulation
- Horizontal radiation angle of 220°
- Burning time 4 HRS
- Charging time of 2 hours

** Also available in a set as UN-220



UNION-5N / 8N-SILVER

- UNION-N cycle computer with silver coloured housing
- Available with 5- and 8- functions with wire (dark grey inner panel)



UNION-5N / 8N-BLACK

- UNION-N cycle computer with black coloured housing
- Available with 5- and 8- functions with wire (black inner panel)



UNION-5 / 8 / 10

- UNION cycle computer with titanium coloured housing
- Available with 5-, 8- and 10- functions with wire



UNION-9W

- UNION cycle computer with titanium coloured housing
- Available with 9- functions wireless

MODEL FUNCTION	UNION-5N UNION-5	UNION-8N UNION-8	UNION-10	UNION-9W
Current speed	V	V	V	V
Average speed		V	V	V
Maximum speed		V	V	V
Trip distance	V	V	V	V
Odometer	V	V	V	V
Distance/ day				V
Auto scan	V	V	V	V
Speed pacer			V	
Riding time		V	V	V
Total riding time			V	
12 hours clock	V	V	V	
12/24 hours clock				V
FEATURES				
With wire	V	V	V	
Wireless				V
Auto ON/OFF				V

- 8 models of high quality computers
- Two years of full guarantee
- All computers packed in blister-panelbox
- Exclusive housing designs
- Special handlebar bracket
- Assembly instructions and user manual in 10 languages
- Easy installment

Headset Tool

BT-301
Headset wrench
30-32mm x 36-40mm



Hub Cone Tool

BT-310
Hub cone wrench
13-15mm x 14-16mm
(set of 2 pieces)



Bottom Bracket Tool

BT-630
Cartridge bottom bracket
tool (Shimano-type)



Tire Lever

BT-850
Tire lever set (nylon / fiberglass reinforced)



Freewheel and Cassette Tools

BT-410
Freewheel remover for Shimano HG20

BT-420
Cassette sprocket locking tool with
stabilizer (Shimano-type)

BT-440
Cassette sprocket locking tool (Shimano-type)

BT-490
Freewheel turner (chainwhip)



Spoke Tools

BT-127
Spoke wrench for 0,127"
nipples (DT Swiss &
Wheelsmith)



BT-136
Spoke wrench for 0,136"
nipples (Asian nipples)



BT-130
Spoke wrench for 0,130"
nipples (European nipples)



BT-139
Spoke wrench 3-in-1
(for all nipples)



Crank Tools

BT-510

Cotterless crank extractor (14mm)



BT-520

Cotterless crank extractor with wrench (all axles)



Chain Tools

BT-710

Chain rivet extractor (fits all chains)



BT-750

Chain rivet extractor
Cr-Mo steel
(fits all chains)



Cleaning Tools

BT-780

Chain scrubber with solvent reservoir and bristles



BT-860

Deraileur and chain scrubber



Workshop Stand

BT-999

Aluminium workshop stand
Completely foldable
Bicycle can be fixed under any angle (360°)



Folding Tool

BT-950

Folding tool with 9 functions



Pedal Tools

BT-015

Pedal wrench





- Full range of high quality bicycle chains
- Type tested and certificated by German TÜV Product Service
- Two years warranty
- All chains packed in a compact panelbox with euroslot
- All panelboxes include connector for tool-free assembly
- All panelboxes carry BAR code
- QR-code for easy access to product information
- 3 models with special GST coating for supreme anti-rust protection



step 1
To connect the Sigma Connector, hold the inner plate ends of the chain in both hands and insert the connecting link.



step 2
Now that one side of the Sigma Connector is inserted, place the outer connector plate on one pin, then place your thumbs over the outside plate and both pins. Gently flex the chain by pushing with thumbs until the outside connector plate snaps into position over the second pin.



step 3
Make sure the plates are parallel to each other and plate is fully seated in the pin channel. Note: If the outside connector plate is not seated in the channel, the plate may fall off.



Disassembly :
With the connector plate facing you, grasp the chain 4 to 5 links away from the connector and flex the chain by pushing with your thumbs. The link disconnects and the connector can be removed.



resists > 300hrs. salt spray test

	Type	Art.nr.	Size	Length	Finish	Design	Tensile strength	Compatibility	Extra feature	Connector
	747	390190	1/2"×1/8"	112 links	black	bush-type roller chain	>920 KGS	coaster brake	-	1 set UN-01 included
	410H	390410	1/2"×1/8"	112 links	black	bush-less	>920 KGS	single speed and gear hub 1/8"	-	1 set UN-33 included
	410H-AR	390415	1/2"×1/8"	112 links	titanium-grey with black pins	bush-less	>920 KGS	single speed and gear hub 1/8"		1 set UN-33 in GST grey included
	430H	390430	1/2"×3/32"	112 links	black	bush-less	>1020 KGS	gear hub 3/32" and non-index	-	1 set UN-25 included
	430H-AR	390435	1/2"×3/32"	112 links	titanium-grey with black pins	bush-less	>1020 KGS	gear hub 3/32"		1 set UN-25 in GST grey included
	710	390710	1/2"×3/32"	116 links	black	bush-less	>1020 KGS	5-/6-/7-speed index UG	-	1 set UN-23 included
	810	390810	1/2"×3/32"	116 links	black	bush-less	>1020 KGS	7-/8-speed IG/HG	Inner chamfer on inner plates	1 set UN-23 included

	Type	Art.nr.	Description	Application	Quantity	Size	Finish
	UN-01	390001	Spring clip connector Use standard plier Fits all chain brands	1/2"×1/8" bush-type coaster brake chain	2 sets on card or 500 in bulk	1/2"×1/8"	black
	UN-33	390033	Sigma connector No tools required Fits all chain brands	1/2"×1/8" chain for gear hub or single speed	2 sets on card or 500 in bulk	1/2"×1/8"	black
	UN-25	390025	Sigma connector No tools required Fits all chain brands	1/2"×3/32" chain for gear hub	2 sets on card or 500 in bulk	1/2"×3/32"	black
	UN-23	390023	Sigma connector No tools required Fits all chain brands	1/2"×3/32" derailleur chain 5-/6-/7-8-speed	2 sets on card or 500 in bulk	1/2"×3/32"	black/silver
	UN-20	390020	Sigma connector No tools required Fits all chain brands	1/2"×5/64" derailleur chain 9-speed	2 sets on card or 500 in bulk	1/2"×5/64"	silver



GH-001
fits various brands



GH-002
fits various brands



GH-003
fits various brands



GH-005
fits various brands



GH-006
fits various brands



GH-009
fits various brands



GH-010
fits various brands



GH-011
fits various brands



GH-012
fits various brands



GH-013
fits various brands



GH-014
fits various brands



GH-015
fits various brands



GH-017
fits various brands



GH-018
fits various brands



GH-020
fits various brands



GH-021
fits Giant and others



GH-022
fits various brands



GH-023
fits various brands



GH-026
fits various brands



GH-027
fits various brands



GH-029
fits various brands



GH-033
fits various brands



GH-036
fits various brands



GH-038
fits various brands



GH-039
fits various brands



GH-041
fits various brands



GH-043
fits various brands



GH-045
fits various brands



GH-049
fits various brands



GH-051
fits various brands



GH-056
fits various brands



GH-057
fits various brands



GH-058
fits various brands



GH-059
fits various brands



GH-060
fits various brands



GH-061
fits various brands



GH-062
fits various brands



GH-063
fits various brands



GH-068
fits Trek and others



GH-069
fits various brands



GH-072
fits various brands



GH-075
fits various brands



GH-076
fits various brands



GH-078
fits various brands



GH-080
fits various brands



GH-081
fits various brands



GH-082
fits various brands



GH-083
fits Specialized (road)



GH-084
fits Specialized (MTB)



GH-085
fits Cube



GH-086
fits Specialized



GH-087
fits various brands



GH-088
fits various brands



GH-089
fits Specialized



GH-090
fits Felt



GH-092
fits Bianchi



GH-093
fits various brands



GH-094
fits Specialized



GH-095
fits Marin



GH-096
fits Marin



GH-097
fits Corratec and others



GH-098
fits KTM



GH-099
fits KTM



GH-100
fits various brands



GH-101
fits various brands



GH-102
fits various brands



GH-103
fits various brands



GH-104
fits various brands



GH-105
fits various brands



GH-106
fits various brands



GH-107
fits various brands



GH-108
fits Cannondale



GH-109
fits Cannondale



GH-110
fits Giant



GH-111
fits Trek



GH-112
fits Trek



GH-113
fits Trek and others



GH-114
fits various brands



GH-115
fits various brands



GH-116
fits various brands



GH-117
fits various brands



GH-118
fits various brands



GH-119
fits various brands



GH-120
fits Scott



GH-121
fits various brands



GH-122
fits various brands



GH-123
fits various brands



GH-124
fits various brands



GH-125
fits Cannondale



GH-126
fits various brands



GH-127
fits various brands



GH-128
fits various brands



GH-129
fits various brands



GH-130
fits various brands



GH-131
fits various brands



GH-132
fits Felt and others



GH-133
fits various brands



GH-134
fits Giant



GH-135
fits Giant



GH-136
fits Giant



GH-137
fits Trek



GH-138
fits Trek



GH-139
fits Trek



GH-140
fits Specialized



GH-141
fits Specialized



GH-142
fits Specialized



GH-143
fits Specialized



GH-144
fits GT



GH-145
fits various brands



GH-146
fits various brands



GH-147
fits Cervelo, Eddy Merckx



GH-148
fits Cannondale



GH-149
fits Cannondale



GH-150
fits Cannondale



GH-151
fits Cannondale



GH-152
fits Eddy Merckx



GH-153
fits various brands



GH-154
fits various brands



GH-155
fits Orbea



GH-156
fits Scott



GH-157
fits Scott



GH-158
fits Cervelo



GH-159
fits Specialized



GH-160
fits Cannondale



GH-161
fits Trek



GH-162
fits Lapierre, Koga



GH-163
fits Scott



GH-164
fits Cube



GH-165
fits Cube



GH-166
fits Specialized



GH-167
fits Lapierre, Ghost



GH-168
fits Lapierre



GH-169
fits Ghost



GH-170
fits Ghost



GH-171
fits Ghost



GH-172
fits Ghost



GH-173
fits Ghost, Koga



GH-174
fits Ghost, Koga



GH-175
fits Cube



GH-176
fits Cube



GH-177
fits Cube



GH-178
fits Bergamont



GH-179
fits Stevens



GH-180
fits Stevens, Kuota



GH-181
fits Scott



GH-182
fits Scott



GH-183
fits Giant



GH-184
fits Giant



GH-185
fits Giant



GH-186
fits Giant



GH-187
fits various brands



GH-188
fits Trek



GH-189
fits Trek



GH-190
fits Trek



GH-191
fits Giant



GH-192
fits Cannondale



GH-199
fits KTM



GH-200
fits various brands



GH-201
fits Cube



GH-202
fits various brands



GH-203
fits Stevens, BMC



GH-204
fits Focus



GH-205
fits Fuji



GH-206
fits Cannondale



GH-207
fits Cervelo



GH-208
fits Colnago



GH-209
fits Willer and others



GH-210
fits Bulls and others



GH-211
fits BH and others



GH-212
fits Scott



GH-213
fits various brands



GH-214
fits Focus



GH-215
fits Focus



GH-216
fits Focus



GH-217
fits Scott



GH-218
fits Lapierre



GH-219
fits various brands



GH-220
fits various brands



GH-221
fits Lapierre



GH-222
fits Lapierre



GH-223
fits Lapierre



GH-224
fits Haibike



GH-225
fits Trek



GH-226
fits BMC



GH-227
fits Bergamont



GH-228
fits Fuji



GH-229
fits Focus and others



GH-230
fits BMC



GH-231
fits Pinarello



GH-232
fits Felt



GH-233
fits Giant



GH-234
fits Willer



GH-235
fits Giant



GH-236
fits Ghost



GH-237
fits BMC



GH-238
fits various brands



GH-239
fits various brands



GH-240
fits various brands



GH-241
fits various brands



GH-242
fits various brands



GH-243
fits BH



GH-244
fits various brands



GH-245
fits various brands



GH-246
fits KTM



GH-247
fits KTM



GH-248
fits KTM



GH-249
fits Bulls



GH-250
fits Bulls



GH-251
fits Bulls



GH-252
fits Bulls



GH-253
fits Bulls



GH-254
fits Bulls



GH-255
fits Bulls



GH-256
fits Orbea



GH-257
fits Cube



GH-258
fits Stevens, Corratec



GH-259
fits Giant



GH-260
fits Cannondale



GH-261
fits Giant



GH-262
fits BH



GH-263
fits Bulls



GH-264
fits Cube



GH-265
fits Orbea



GH-266
fits Focus



GH-267
fits Focus



GH-268
fits Decathlon



GH-269
fits Stevens



GH-270
fits Canyon



GH-271
fits Bergamont



GH-272
fits Bergamont



GH-273
fits Bergamont



GH-274
fits Orbea



GH-275
fits Scott



GH-276
fits Scott



GH-277
fits Scott



GH-278
fits Scott



GH-279
fits Stevens



GH-280
fits Stevens



GH-281
fits Scott



GH-282
fits Orbea



GH-283
fits GT



GH-284
fits GT



GH-285
fits Cube



GH-286
fits Cube



GH-287
fits Cube



GH-288
fits Cube



GH-289
fits Focus



GH-290
fits Focus



GH-291
fits Focus



GH-292
fits Scott



GH-293
fits Specialized



GH-294
fits Specialized



GH-295
fits Specialized



GH-296
fits Specialized



GH-297
fits Specialized



GH-299
fits Haibike



GH-300
fits Haibike



GH-301
fits Haibike & others



GH-302
fits Specialized



GH-298
fits Specialized



GH-303
fits Cannondale



GH-304
fits Rose



GH-305
fits Canyon



GH-306
fits Haibike



GH-307
fits Stevens



GH-308
fits Stevens



GH-309
fits Focus



GH-310
fits Giant



GH-311
fits Cube



GH-312
fits Stevens, Felt, Kona



GH-399
Universal Gear Hanger-compatible
with SRAM UDH
fits Bulls, Canyon, Conway, Cube,
Focus, Lapierre, Merida, Scott,
Specialized, Trek and others





BOX TOP-20

Assortment box with the 20 most sold gear hangers (1 pc. each), fitting frames for hundreds of bike brands.

CONTENT:

GH-001 GH-002 GH-003
GH-005 GH-006 GH-009
GH-010 GH-011 GH-012
GH-013 GH-014 GH-015
GH-017 GH-018 GH-020
GH-022 GH-023 GH-029
GH-033 GH-039



BOX TOP 21-40

Assortment box with another 20 common gear hangers (1 pc. each), fitting frames for many different bike brands.

CONTENT:

GH-021 GH-026 GH-036
GH-043 GH-045 GH-056
GH-058 GH-068 GH-080
GH-106 GH-107 GH-114
GH-116 GH-117 GH-119
GH-124 GH-126 GH-128
GH-130 GH-131



BOX SPECIALS

Assortment box with the 20 special hangers fitting the latest frames of Cannondale, Specialized, Trek and Giant

CONTENT:

GH-083 GH-086 GH-094
GH-108 GH-109 GH-110
GH-111 GH-112 GH-134
GH-135 GH-139 GH-140
GH-017 GH-018 GH-020
GH-142 GH-148 GH-149
GH-150 GH-151



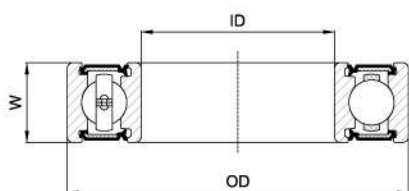
BOX SELECTION

Create your own assortment box, using your selection from the 160 different stickers that come with this box, all drawings at scale 1:1



CARTRIDGE BEARING

Races: CrMo
Balls: CrMo (HRC 61-66)
Retainer: Steel
Sealing: Rubber 2RS (light contact)
Grease: Multemp SRL (Kyodo Yushi)
Tolerance: ABEC-3



CARTRIDGE BEARING

Item No.	Bearing No.	IDxODxW
CB-010	MR105	5x10x4
CB-011	685	5x11x5
CB-012	695	5x13x4
CB-013	605	5x14x5
CB-020	MR106	6x10x3
CB-021	686	6x13x5
CB-022	696	6x15x5
CB-024	606	6x17x6
CB-025	626	6x19x6
CB-030	MR137	7x13x4
CB-031	607	7x19x6
CB-040	688	8x16x5
CB-041	698	8x19x6
CB-042	608	8x22x7
CB-050	689	9x17x5
CB-051	699	9x20x6
CB-053	R6	3/8"x7/8"x9/32"
CB-056	609	9x24x7
CB-058	629	9x26x8
CB-060	6700	10x15x4
CB-061	6800	10x19x5
CB-062	63800	10x19x7
CB-064	6900	10x22x6
CB-065	6000	10x26x8
CB-066	MR16100	10x28x8
CB-067	6200	10x30x9
CB-070	6701	12x18x4
CB-071	6801	12x21x5
CB-072	63801	12x21x7

CARTRIDGE BEARING

Item No.	Bearing No.	IDxODxW
CB-074	6901	12x24x6
CB-075	6001	12x28x8
CB-078	6201	12x32x10
CB-080	6702	15x21x4
CB-081	6802	15x24x5
CB-082	63802	15x24x7
CB-083	MR15267	15x26x7
CB-084	MR15268	15x26x8
CB-085	6902	15x28x7
CB-086	6002	15x32x9
CB-088	6202	15x35x11
CB-091	MR16287	16x28x7
CB-093	MR163110	16x31x10
CB-100	6703	17x23x4
CB-101	6803	17x26x5
CB-104	MR17286	17x28x6
CB-105	MR17287	17x28x7
CB-106	6903	17x30x7
CB-107	6003	17x35x10
CB-108	6203	17x40x12
CB-110	MR18307	18x30x7
CB-130	6704	20x27x4
CB-131	MR20307	20x30x7
CB-132	6804	20x32x7
CB-133	63804	20x32x10
CB-134	6904	20x37x9
CB-135	6004	20x42x12
CB-137	MR18338	18x33x8
CB-138	MR215317	21.5x31x7

CARTRIDGE BEARING

Item No.	Bearing No.	IDxODxW
CB-139	6904	21.5x37x9
CB-140	6004	21.5x42x12
CB-141	MR22378	22x37x8
CB-145	MR22378B	22x37x8/11.5
CB-146	MR22378-E	22x37x8/11.5
CB-160	MR24377	24x37x7
CB-162	MR24378	24x37x8
CB-170	6705	25x32x4
CB-171	6805/6	25x37x6
CB-172	6805	25x37x7
CB-174	63805	25x37x10
CB-176	6905	25x42x9
CB-178	6005	25x47x12
CB-180	6805B	25.1x37x7
CB-190	MR27537	27.5x37x7
CB-200	R8	1/2"x1-1/8"x 5/16"
CB-210	6706	30x37x4
CB-212	6806	30x42x7
CB-214	6906	30x47x9
CB-230	MR314357	31x43.5x7
CB-240	6707	35x44x5
CB-244	6807	35x47x7
CB-251	6708	40x50x6
CB-252	6808	40x52x7
CB-260	6809	45x58x7
CB-270	6710	50x62x6
CB-271	6810	50x65x7



CERAMIC BEARING

Races: CrMo

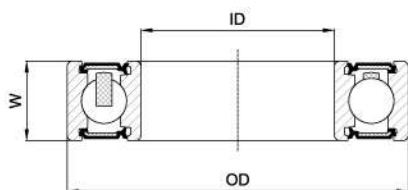
Balls: Si₃N₄ Silicon Nitride (HRC 75-89)

Retainer: Nylon

Sealing: Rubber LLB (non contact)

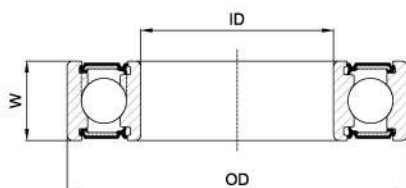
Grease: Multemp PS2 (Kyodo Yushi)

Tolerance: ABEC-5



CERAMIC BEARING

Item No.	Bearing No.	IDxODxW
CB-305	686 CER	6x13x5
CB-308	626 CER	6x19x6
CB-311	697 CER	7x17x5
CB-314	607 CER	7x19x6
CB-317	688 CER	8x16x5
CB-320	608 CER	8x22x7
CB-323	6800 CER	10x19x5
CB-326	6900 CER	10x22x6
CB-329	6000 CER	10x26x8
CB-332	6801 CER	12x21x5
CB-335	6901 CER	12x24x6
CB-338	6001 CER	12x28x8
CB-341	6802 CER	15x24x5
CB-344	MR15267 CER	15x26x7
CB-347	6902 CER	15x28x7
CB-350	6803 CER	17x26x5
CB-353	MR17287 CER	17x28x7
CB-356	6903 CER	17x30x7
CB-365	6804 CER	20x32x7
CB-368	6904 CER	20x37x9
CB-371	MR24377 CER	24x37x7
CB-374	6805 CER	25x37x7
CB-377	6806 CER	30x42x7
CB-380	6807 CER	35x47x7



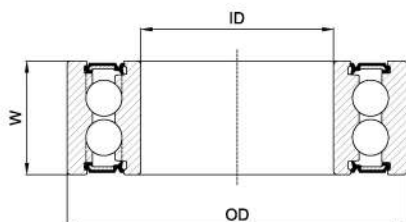
MAX BEARING

Races: CrMo
Balls: CrMo (HRC 61-66)
Retainer: Non (full ball bearing)
Sealing: Rubber LLU (full contact)
Grease: Multemp SLR (Kyodo Yushi)



MAX BEARING		
Item No.	Bearing No.	IDxODxW
CB-420	668V MAX	8x16x5
CB-423	698V MAX	8x19x6
CB-426	608V MAX	8x22x7
CB-429	6800V MAX	10x19x5
CB-432	63800V MAX	10x19x7
CB-435	6900V MAX	10x22x6
CB-438	6000V MAX	10x26x8
CB-441	6801V MAX	12x21x5
CB-444	6901V MAX	12x24x6
CB-447	6001V MAX	12x28x8

MAX BEARING		
Item No.	Bearing No.	IDxODxW
CB-450	6802V MAX	15x24x5
CB-453	6902V MAX	15x28x7
CB-456	6803V MAX	17x26x5
CB-459	17286V MAX	17x28x6
CB-462	6903V MAX	17x30x7
CB-465	6804V MAX	20x32x7
CB-468	6805V MAX	25x37x7
CB-471	6808V MAX	40x52x7
CB-474	6809V MAX	45x58x7



MAX DOUBLE ROW BEARING

Races: CrMo
Balls: CrMo (HRC 61-66)
Retainer: Non (full ball bearing)
Sealing: Rubber LLU (full contact)
Grease: Multemp SLR (Kyodo Yushi)



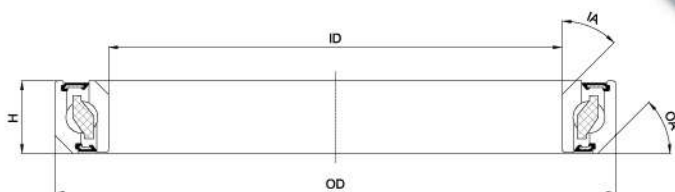
MAX DOUBLE ROW BEARING		
Item No.	Bearing No.	IDxODxW
CB-620	DR11197V MAX	11x19x7 double row
CB-625	3801V MAX	12x21x8 double row
CB-630	3901V MAX	12x24x10 double row
CB-635	3802V MAX	15x24x7 double row
CB-640	DR17289V MAX	17x28x9 double row



HEADSET BEARING

Races: CrMo
Balls: CrMo (HRC 61-66)
Retainer: Nylon
Sealing: Rubber LLU (full contact)
Grease: Multemp SRL (Kyodo Yushi)

NEW



HEADSET BEARING		
Item No.	IDxODxH	IA/OA
CB-706	27.2x38x6.5	36°/45°
CB-710	30.2x39x6.5	45°/45°
CB-713	30.2x41x6.5	36°/45°
CB-714	30.2x41x6.5	45°/45°
CB-715	30.2x41x7	36°/45°
CB-716	30.2x41x7	45°/45°
CB-720	30.2x41.5x6.5	36°/36°
CB-723	30.2x41.8x6.5	45°/45°
CB-725	30.2x41.8x7	45°/45°
CB-732	30.5x41.8x6.5	45°/45°
CB-735	30.5x41.8x8	45°/45°
CB-740	31x41.8x8	45°/45°
CB-745	33.05x43.8x7	30°/45°
CB-751	34.1x46x7	45°/45°
CB-752	34.1x46.8x7	45°/45°

HEADSET BEARING		
Item No.	IDxODxH	IA/OA
CB-755	34.1x46.9x7	45°/45°
CB-762	37x46.9x7	45°/45°
CB-764	37x48x6.5	36°/45°
CB-766	37x48x7	45°/45°
CB-768	37x49x6.5	36°/45°
CB-770	37x49x7	45°/45°
CB-774	40x51x6.5	36°/36°
CB-776	40x51.8x7.5	36°/45°
CB-778	40x51.8x8	36°/45°
CB-780	40x51.9x8	45°/45°
CB-782	40x52x6.5	36°/45°
CB-784	40x52x7	45°/45°
CB-786	40x52x7.5	45°/45°
CB-790	40x52x8	45°/45°



Hub & BB



E-bike motor



MAX suspension pivot



Headset

Hub & BB

Cartridge bearing		
Type	Bearing number	Dimensions IDxODxW
CB-042	608	8x22x7
CB-061	6800	10x19x5
CB-065	6000	10x26x8
CB-071	6801	12x21x5
CB-074	6901	12x24x6
CB-075	6001	12x28x8
CB-081	6802	15x24x5
CB-083	MR15247	15x26x7
CB-085	6902	15x28x7
CB-086	6002	15x32x9
CB-091	MR16287	16x28x7
CB-101	6803	17x26x5
CB-105	MR17287	17x28x7
CB-106	6903	17x30x7
CB-110	MR18307	18x30x7
CB-132	6804	20x32x7
CB-160	MR24377	24x37x7
CB-171	6805/6	25x37x6
CB-172	6805	25x37x7
CB-212	6806	30x42x7

2 pcs. each

E-bike motor

Cartridge bearing		
Type	Bearing number	Dimensions IDxODxW
CB-042	608	8x22x7
CB-056	609	9x24x7
CB-065	6000	10x26x8
CB-074	6901	12x24x6
CB-078	6201	12x32x10
CB-106	6903	17x30x7
CB-134	6904	20x37x9
CB-135	6004	20x42x12
CB-137	MR18338	18x33x8
CB-139	6904 d21.5	21,5x37x9
CB-140	6004 d21.5	21,5x42x12
CB-172	6805	25x37x7
CB-214	6906	30x47x9
CB-244	6807	35x47x7
CB-252	6808	40x52x7
CB-260	6809	45x58x7

2 pcs. each

MAX suspension pivot

Max cartridge bearing - single row (full ball)		
Type	Bearing number	Dimensions IDxODxW
CB-420	688V MAX	8x16x5
CB-423	698V MAX	8x19x6
CB-426	608V MAX	8x22x7
CB-429	6800V MAX	10x19x5
CB-432	63800V MAX	10x19x7
CB-435	6900V MAX	10x22x6
CB-438	6000V MAX	10x26x8
CB-441	6801V MAX	12x21x5
CB-444	6901V MAX	12x24x6
CB-447	6001V MAX	12x28x8
CB-450	6802V MAX	15x24x5
CB-453	6902V MAX	15x28x7
CB-456	6803V MAX	17x26x5
CB-462	6903V MAX	17x30x7
CB-465	6804V MAX	20x32x7
CB-468	6805V MAX	25x37x7


2 pcs. each


Headset

Headset bearing				
Type	ID	OD	Height	Angle (IA/OA)
CB-713	30,15	41,00	6,5	36°/45°
CB-714	30,15	41,00	6,5	45°/45°
CB-715	30,15	41,00	7	36°/45°
CB-716	30,15	41,00	7	45°/45°
CB-723	30,15	41,80	6,5	45°/45°
CB-725	30,15	41,80	7	45°/45°
CB-735	30,50	41,80	8	45°/45°
CB-752	34,10	46,80	7	45°/45°
CB-762	37,00	46,90	7	45°/45°
CB-774	40,00	51,00	6,5	36°/36°
CB-776	40,00	51,80	7,5	36°/45°
CB-778	40,00	51,80	8	36°/45°
CB-780	40,00	51,90	8	45°/45°
CB-784	40,00	52,00	7	45°/45°
CB-786	40,00	52,00	7,5	45°/45°
CB-790	40,00	52,00	8	45°/45°

2 pcs. each

 **Organic** compound is specially formulated to produce excellent all around performance, perfect for everyday use.

 **Sintered** compound is designed to produce consistent performance in all condition, offer high durability and high resistance to contamination by mud, water, sand and grit.

 **With spring**

 **HOPE**

 **AVID**

 **MAGURA**

 **CAMPAGNOLO**

 **PROMAX**

 **CLARKS**

 **SHIMANO**

 **FORMULA**

 **SRAM**

 **GIANT**

 **TEKTRO**

 **HAYES**

 **ZOOM**

 **AVID**

DBP-11

DBP-11S



for AVID Juicy BB7 / Juicy Ultimate and PROMAX DSK-950

 **AVID**

DBP-34

DBP-34S



for AVID Code

 **AVID**

DBP-38

DBP-38S



for AVID BB5

 **AVID**

DBP-44

DBP-44S



for AVID Elixir / DB and SRAM XX / XO series

 **AVID**

DBP-57

DBP-57S



for AVID XO trail and SRAM GUIDE

 **AVID**

DBP-63

DBP-63S



for AVID DB1 / DB3

 **CAMPAGNOLO**

DBP-67



for CAMPAGNOLO

 **CLARKS**

DBP-62



for CLARKS CMB-8

 **FORMULA**

DBP-07



for FORMULA hydraulic calipers

 **FORMULA**

DBP-16

DBP-16S



for FORMULA B4 Team / Pro / SL & 4Racing calipers

 **FORMULA**

DBP-31

DBP-31S



for FORMULA Oro calipers

 **FORMULA**

DBP-42

DBP-42S



for FORMULA Mega

 **FORMULA**

DBP-50



for FORMULA Activa / MD1 mechanical calipers

 **GIANT**

DBP-21



for GIANT MPH 2 / 3 calipers

 **GIANT**

DBP-51



for GIANT MPH 1 calipers

 **HAYES**

DBP-01

DBP-01S



for HAYES HFX and PROMAX hydraulic calipers

 **HAYES**

DBP-26

DBP-26S



for HAYES Sole / MX2 / MX3

 **HAYES**

DBP-37

DBP-37S



for HAYES El Camino calipers

 **HAYES**

DBP-40

DBP-40S



for HAYES Stroker Ryde

 **HAYES**

DBP-41

DBP-41S



for HAYES Stroker Trial

 **HAYES**

DBP-45

DBP-45S



for HAYES Ace

 **HOPE**

DBP-05

DBP-05S



for HOPE open/closed 2-piston calipers Pro / Sport

 **HOPE**

DBP-20

DBP-20S



for HOPE Mini calipers

 **HOPE**

DBP-22

DBP-22S



for HOPE M4 / DH4 / E4 calipers

 **HOPE**

DBP-24



for HOPE XC4

H HOPE

DBP-28

Or

DBP-28S

Sin

*



for HOPE Mono 6-pot callipers

H HOPE

DBP-29

Or

DBP-29S

Sin

*



for HOPE Mono mini callipers

H HOPE

DBP-35

Or

*



for HOPE Mono V2

H HOPE

DBP-39

Or



for HOPE Mono trial

H HOPE

DBP-48

Or

DBP-48S

Sin

*



for HOPE X2

H HOPE

DBP-58

Or

DBP-58S

Sin

*



for HOPE V4

H HOPE

DBP-59

Or

DBP-59S

Sin

*



for HOPE E4

M MAGURA

DBP-04

Or

DBP-04S

Sin



for MAGURA Clara 2000 / Louise 98-01 callipers

M MAGURA

DBP-12

Or

DBP-12S

Sin



for MAGURA Julie callipers

M MAGURA

DBP-14

Or

DBP-14S

Sin



for MAGURA Clara 2001-2 / Louise 2002/Louise FR callipers

M MAGURA

DBP-18

Or

*



for MAGURA Gustav M callipers

M MAGURA

DBP-19

Or

DBP-19S

Sin



for MAGURA Marta / SL callipers

M MAGURA

DBP-36

Or

DBP-36S

Sin



for MAGURA Louise 2007 / Louise Carbon 2008

M MAGURA

DBP-55

Or

DBP-55S

Sin



for MAGURA MT2/ MT4/ MT6/ MT8

M MAGURA

DBP-60

Or

DBP-60S

Sin



for MAGURA MT5/MT7

M MAGURA

DBP-65

Or

DBP-65S

Sin



for MAGURA MTS (2015-)

P PROMAX

DBP-30

Or



for PROMAX DSK-400 / 601J / X-nine

S SHIMANO

DBP-09

Or

DBP-09S

Sin

*



for SHIMANO Deore XT M755 / 756 / GRIMECA System 8.0+12 / SRAM 9.0 / HOPE Mono M4 callipers

S SHIMANO

DBP-10

Or

DBP-10S

Sin

*



for SHIMANO Deore M515/M475/ C501/C601 mechanical/M525 hydraulic callipers

S SHIMANO

DBP-15

Or

DBP-15S

Sin

*



for SHIMANO Deore M555 hydraulic / C900 / 901 Nexave callipers

S SHIMANO

DBP-17

Or

DBP-17S

Sin

*



for SHIMANO XTR M965/966/Saint M800/Hone M-601/Deore XT M765/ LX M858 callipers

S SHIMANO

DBP-43

Or

DBP-43S

Sin

*



for SHIMANO Saint

S SHIMANO

DBP-52

Or

DBP-52S

Sin

*



for SHIMANO XTR 2011-2016

S SHIMANO

DBP-64

Or

DBP-64S

Sin

*



for SHIMANO Ultegra

S SRAM

DBP-54

Or

DBP-54S

Sin



for SRAM Red / Level

T TEKTRO

DBP-08

Or

DBP-08S

Sin



for TEKTRO mechanical callipers

T TEKTRO

DBP-27

Or

DBP-27S

Sin

*



for TEKTRO Volans / Auriga / E-Sub

T TEKTRO

DBP-46

Or



for TEKTRO IOX

T TEKTRO

DBP-56

Or

DBP-56S

Sin



for TEKTRO Lyra

Z ZOOM

DBP-23

Or



for ZOOM

Disc Brake Pads E-Bike

Substitute your standard disc brake pad of your E-bike with a special UNION E-bike pad
 The E-bike pad has a special compound with a high percentage of KEVLAR®
 The life span will be 50% longer than standard organic versions of these pads
 No brake power fading due to overheated brake pads
 The E-bike pads offer consistent and smooth braking power, also at higher speed

DBP-10E
for Shimano Deore



DBP-43E
for Shimano Saint



DBP-52E
for Shimano XTR 2011-



DBP-44E
for AVID Elixir



DBP-53E
for AVID code / SRAM



DBP-57E
for AVID XO / SRAM Guide



DBP-55E
for Magura MT-2/4/6/8



DBP-60E
for Magura MT-5/7



DBP-65E
for Magura MT-5 (2015-)



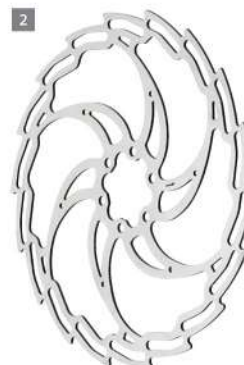
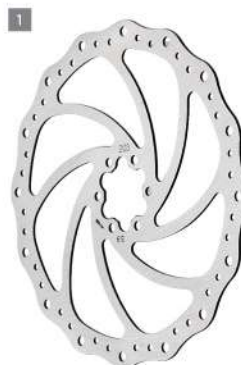
DBP-61E
for Tektro Dorado



Disc Brake Rotors

Special high grade stainless steel,
 excellent wet/dry performance, disc wear and heat dissipation

1 Wavy	DBR-02-160	ø160mm	Stainless Steel	6 bolts
	DBR-02-180	ø180mm		
	DBR-02-203	ø203mm		
2 WindCutter	DBR-03-160	ø160mm		
	DBR-03-180	ø180mm		
	DBR-03-203	ø203mm		



Disc Brake Pads with Cooling Fins

The cooling fin helps to prevent heat build-up by improving the heat dissipation and reduce the brake-pad surface temperature by 50°C
 No brake power fading due to overheated brake pads
 Exactly the same specifications as originally supplied, ensuring consistent performance
 Brake pad compound with high friction coefficient that offers consistent and smooth braking power

DBP-44C-SET

for AVID DB / Elixir



DBP-42C-SET

for FORMULA Mega One



DBP-55C-SET

for MAGURA MT2 / MT4 / MT6 / MT8



DBP-17C-SET

for SHIMANO XTR -2010



DBP-52C-SET

for SHIMANO XTR 2011-2016



DBP-64C-SET

for SHIMANO Ultegra



ASSORTMENT BOX TOP-20

CONTENT :	DBP-11	AVID	DBP-12	MAGURA
	DBP-38	AVID	DBP-14	MAGURA
	DBP-44	AVID	DBP-36	MAGURA
	DBP-57	AVID	DBP-55	MAGURA
	DBP-31	FORMULA	DBP-10	SHIMANO
	DBP-42	FORMULA	DBP-17	SHIMANO
	DBP-01	HAYES	DBP-52	SHIMANO
	DBP-26	HAYES	DBP-64	SHIMANO
	DBP-40	HAYES	DBP-08	TEKTRO
	DBP-04	MAGURA	DBP-46	TEKTRO



WORKSHOP BOXES (25 PRS.)

Packed per 25 sets incl. spring and pin
 Boxes are stackable
 8 different models available

DBP-10 bulk box	DBP-44 bulk box
DBP-11 bulk box	DBP-52 bulk box
DBP-17 bulk box	DBP-55 bulk box
DBP-42 bulk box	DBP-64 bulk box



BS-300

- V-Brake brake shoes, cartridge
- Aluminium pad holder
- Silver finish
- Length: 72mm
- Also available in black finish



BS-301

- Pads & pins only, for BS-300
- Length: 72mm



BS-320

- V-Brake brake shoes, cartridge
- Aluminium pad holder
- Silver finish
- Triple color pad
- Length: 72mm



BS-321

- Pads & pins only, for BS-320
- Length: 72mm



BS-400

- V-Brake brake shoes
- Non-symmetric post
- Length: 72mm



BS-420

- V-Brake brake shoes
- Symmetric post
- Length: 70mm



BS-440

- V-Brake brake shoes
- Non-symmetric post
- Length: 80mm
- Specially designed for E-Bike



BS-460

- V-Brake brake shoes
- Symmetric post
- Length: 75mm
- Specially designed for E-Bike



BS-500

- Cantilever brake shoes
- Hardened Aluminium post (non-symmetric)
- Length: 72mm



BS-520

- Cantilever brake shoes
- Hardened Aluminium post (symmetric)
- Length: 70mm



BS-560

- Cantilever brake shoes
- Symmetric post
- Length: 55mm



BS-600

- Road racing brake shoes, cartridge
- Shimano type
- Aluminium pad holder
- Silver finish
- Length: 55mm
- Also available in black finish



BS-601

- Pads only, for BS-600
- For Aluminium rims
- Length: 55mm



BS-620

- Road racing brake shoes
- Universal type
- Length: 50mm



BS-641

- Pads only, for BS-640
- For Aluminium rims
- Length: 55mm



BS-660

- Road racing brake shoes, cartridge
- Campagnolo Record & Chorus -2000
- Aluminium pad holder
- Carbon anodized finish
- Length: 55mm



BS-661

- Pads only, for BS-660
- For Aluminium rims
- Length: 55mm



BS-801

- For Magura hydraulic rim brake
- Replacement pads only
- Length: 50mm



BS-801E

- For Magura hydraulic rim brake
- Replacement pads only
- Length: 50mm
- Specially designed for E-Bike



WORKSHOP BOXES

- Packed per 25 sets in a sturdy plastic box
- Boxes are stackable
- 6 different models available in a workshop box:

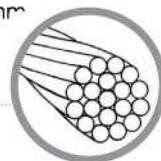
BS-300 bulk box
BS-400 bulk box
BS-420 bulk box

BS-500 bulk box
BS-520 bulk box
BS-560 bulk box



CW-100
Brake cable, 1.6mm,
galvanized steel,
19 strands, length 2250mm

CW-120
Brake cable, 1.6mm,
stainless steel, 19 strands,
length 2250mm



CW-200
Shift/derailleur cable,
1.2mm, galvanized steel,
19 strands, length 2100mm

CW-220
Shift/derailleur cable,
1.2mm, stainless steel,
19 strands, length 2100mm



CW-350
Shift/derailleur casing,
Shimano-type stranded core,
black, dia. 4mm,
length 2000mm



CW-400
Complete brake cable set,
galvanized steel (2250mm),
including outer casing and parts



CW-440
Complete shift/derailleur cable set, galvanized steel
(2100mm), including outer casing
(Shimano-type) and parts

CW-420
Complete brake cable set,
stainless steel (2250mm),
including outer casing and parts

CW-460
Complete shift/derailleur cable set , stainless steel
(2100mm), including outer casing (Shimano-type)
and parts



CW-900
Brake ferrules
200 pcs. in a dispenser bottle



CW-910
Shift ferrules
150 pcs. in dispenser bottle



CW-920
Brake end caps
500 pcs. in dispenser bottle



CW-930
Shift end caps
500 pcs. in dispenser bottle



CW-430		Complete drumbrake cable set, galvanized steel (2250mm) Gazelle-type Including outer casing and all parts
CW-434		Complete drumbrake cable set, galvanized steel (2250mm) Universal type with adjusting screw Including outer casing and all parts
CW-438		Complete drumbrake cable set, galvanized steel (2250mm) Batavus-type with hook Including outer casing and all parts
CW-470		Complete shift cable set, galvanized steel (2500mm) SRAM / Sachs Torpedo Including outer casing and all parts

CW-600

Brake cable, 1.6mm, galvanized steel, 19 strands, with barrel (7x6)
100 pcs. of 1800mm, in workshop box

CW-620

Brake cable, 1.6mm, stainless steel, 19 strands, with barrel (7x6)
100 pcs. of 1800mm, in workshop box

CW-625

Brake cable, 1.6mm, stainless steel, 19 strands, with pear (10x6)
100 pcs. of 1800mm, in workshop box

CW-700

Shift/derailleur cable, 1.2mm, galvanized steel, 19 strands, with barrel (4x4) 100 pcs. of 2100mm, in workshop box

CW-720

Shift/derailleur cable, 1.2mm, stainless steel, 19 strands, with barrel (4x4) 100 pcs. of 2100mm, in workshop box



CW-590

V-Brake guide pipe, 90 degrees
With rubber boot

CW-596

V-Brake guide pipe, flexible
With rubber boot

CW-595

V-Brake guide pipe, 135 degrees
With rubber boot



CW-800

Brake outer casing, universal coiled core, dia. 5mm (CW-300) 30 metres in workshop box, black

CW-810

Brake outer casing, universal coiled core, dia. 5mm (CW-310) 30 metres in workshop box, grey

CW-850

Shift/derailleur casing, Shimano-type stranded core, dia. 4mm (CW-350) 30 metres in workshop box, black

CW-860

Shift/derailleur casing, Shimano-type stranded core, dia. 4mm (CW-360) 30 metres in workshop box, grey

WBC-10

TIG-welded Water Bottle Cage

- Aluminium #6061-T4
- 154mm length, for ~ Ø74 mm
- Ø 6.2mm Alum. wire cage
- Colors: Black or silver
- Weight: 63 gram



WBC-20

TIG-welded Water Bottle Cage

- Aluminium #6061-T4
- 153mm length, for ~ Ø74 mm
- Ø 6.2mm Alum. wire cage
- Colors: Black or silver
- Weight: 68 gram



WBC-25

Aluminium Plate Water Bottle Cage

- One piece aluminium type, in welding free design
- 120 mm length, for ~ Ø74 mm
- Colors: Black
- Weight: 49 gram



WBC-40

PC Water Bottle Cage

- Polycarbonate (PC) material
- Extended and open back side design for more flexibility
- 145 mm length, for ~ Ø74 mm
- Colors: Black
- Weight: 28 gram



WBC-50

Aluminium Plate Water Bottle Cage

- Welding free design
- Take the bottle from the side, for narrow bike frames and for left or right hand users
- 130 mm length, for ~ Ø74 mm
- Color: Black
- Weight: 43 gram



BP-01G

Aluminium Mini Pump with T-handle & Gauge

- Like BP-01, with additional precise in-line gauge



BP-02G

Pocket Aluminium Pump with In-Line Gauge

- Like BP-02, with additional precise in-line gauge
- With aluminium lever and aluminium valve cap



MG-01

- MTB/ATB 24"-26" front and rear fender
- Clips on and off quickly
- Incl. all necessary hardware



MG-03

- Fender for downtube of MTB 22"-26"
- Assembly by 2 anti-slip rubber woven straps



MG-04F/R

- Road bike 700C and 26" front fender
- Light weight design
- Quick fit by 2 long rubber straps (Front)
- Quick release system for seat post (Rear)

MG-11F/R

- MTB 24"-26" front fender
- Suitable for suspension bikes
- Special TPR material mudflap
- Fits steering tubes from 18.5-25.4mm (Front)
- Quick release system for seat post (Rear)



GP-01

- Black + grey
- Length: 128mm
with cutting line at 85mm



GP-02

- Black + grey
- Length: 128mm
with cutting line at 90mm



GP-02L

- Black + grey
- Length: 128mm
with black lock-on ring
also available in long/ short
combination 128mm + 100mm (GP-02LS)



GP-02LS



GP-03

- Black
- Length: 130mm
with cutting line at 95mm



GP-03L

- Black
- Length: 125mm
with black lock-on ring
also available in long/ short
combination 125mm + 90mm (GP-03LS)



GP-04

- Black
- Length: 128mm



GP-05

- Black + grey + dark grey
- Length: 130mm
with cutting line at 95mm



GP-06

- Black + gray
- Length: 125mm



GP-07

- Black + grey
- Length: 130mm
with cutting line at 95mm



KS-10

- Kickstand for rear stay mount
- Material: Aluminium, ED black
- Adjustable 24" - 28"



KS-20

- Center mount kickstand (middle assy)
- Material: Aluminium, silver or ED black
- Adjustable 24" - 28"



KS-30

- Center mount double leg kickstand
- Material: Aluminium, #6061-T6, ED black
- For bike size 28"
- Foot width 195mm

KS-35

- Center mount double leg kickstand
- Material: Aluminium #6061-T6, silver or ED black
- Adjustable 24" - 28"
- Foot width 195mm



TB-01

- Tri-bar with arm rest pads
- Material: Aluminium #6061-T6
- Powder coated black
- Weight: 640g



MB-02

- Foam set for Multibar
- Damping shock and vibration
- Length 400mm
- Incl. 2 handlebar plugs



AH-10

- A-head adjustable 0-60 degrees
- Material: Aluminium #6061-T6, black coated
- Bar bore size 25.4mm
- Extension 90mm



AH-11

- A-head adjustable 0-60 degrees
- Material: Aluminium #6061-T6, black coated
- Bar bore size 25.4mm
- Extension 110mm



AH-12

- A-head adjustable 0-60 degrees
- Material: Aluminium #6061-T6, black coated
- Bar bore size 25.4mm
- Extension 130mm



AH-20

- A-head adjustable 0-60 degrees
- Material: Aluminium #6061-T6, black coated
- Bar bore size 31.8mm
- Extension 95mm



AH-21

- A-head adjustable 0-60 degrees
- Material: Aluminium #6061-T6, black coated
- Bar bore size 31.8mm
- Extension 110mm



AH-22

- A-head adjustable 0-60 degrees
- Material: Aluminium #6061-T6, black coated
- Bar bore size 31.8mm
- Extension 125mm

SSP-02

- Suspension seat post
- Material: Aluminium #6061-T6, silver anodized
- Length 350mm, with ATB/micro adjust head
- Diameters 26.8mm and 27.2mm





HS-10

- Headset threadless 1" for road bike
- SHIS code: EC30/25.4 | EC30/26



HS-11

- Headset threadless 1 1/8" for MTB
- SHIS code: EC34/28.6 | EC34/30



HS-30

- Headset 1 1/8" integrated dimension 41.8 / 30
- SHIS code: IS42/28.6 | IS42/30



HS-35

- Headset 1 1/8" semi-integrated dimension 44 / 30
- SHIS code: ZS44/28.6 | ZS44/30



HS-40

- Headset 1 1/8" tapered integrated dimension 41.8/52.0-39.8
- SHIS code: IS42/28.6 | IS52/40



HS-45

- Headset 1 1/8" tapered semi-integrated dimension 44.0/56.0-39.8
- SHIS code: ZS44/28.6 | ZS56/40



HS-20

- Headset cap for 1" headsets
- Material: Aluminium #6061-T6, black anodized
- Size: 1" cap with 1" star nut
- Stainless steel screw



HS-21

- Headset cap for 1 1/8" headsets
- Material: Aluminium #6061-T6, black anodized
- Size: 1 1/8" cap with 1 1/8" star nut
- Stainless steel screw



BB BOTTOM BRACKET CARTRIDGE

- With high-end sealed cartridge bearings
- Steel cups and Boron-steel spindle
- Incl. 2 bolts (CrMo 12.9)
- Available in 14 lengths (from 103 up to 131.5mm)



BB-E01/E02

- External BB set threaded, Shimano compatible
- 11.2mm (E01) for road bike and 10.2mm (E02) for MTB&city



BB-E03

- External BB set threaded, SRAM compatible
- 12.5mm for road bike, MTB&city



BB-PF01

- Press fit BB for 24mm spindle Shimano
- For bracket width 86.5 / 89 / 92mm



BB-PF02

- Press fit BB for 30mm spindle SRAM / FSA
- For bracket width 68 / 73 / 86.5mm



BB-RPF01

- Press fit reducer BB set
- Convert to Shimano crank (spindle 24mm)
- For frames with BB shell width 68mm



BB-RPF02

- Press fit reducer BB set
- Convert to Shimano crank (spindle 24mm)
- For frames with BB shell width 86mm



BB-RE01

- Press fit reducer sleeve
- Convert to BB set with external thread
- For frames with BB shell width 68mm to 73mm

U UNION®

SSR Pro



xerama

BIKETOOL

Selle San Remo



MARWI®
GROUP

MARWI Taiwan Industrial Co., Ltd.

No.56, Chongyi 3rd Rd., Dajia Dist, Taichung City, Taiwan R.O.C.
Tel: +886-4-26881234 Fax: +886-4-26882141
E-mail: info@marwi.com.tw
Website: www.marwi.com.tw

MARWI Indonesia

P.T. Xerama Bicycle Industrial
Jl, Raya Curug Km. 2, Kp. Cisereh, Ds, Kadu
Jaya, Kec. Curug, Tangerang 15810, Indonesia
Tel: +62-21-5981111 +62-21-5981234
Fax: +62-21-5981570 +62-21-5980238
E-mail: info@marwi.com.tw

MARWI Europe B.V.

Corkstraat 1, 3047 AC Rotterdam, The Netherlands
Tel: +31-10-2088060
E-mail: info@marwi.nl
Website: www.marwi-eu.com

MARWI EUROPE branch office CZ

Mala Velen-Jedlka 22, 40502 Decin 2, Czech Republic
Tel: +420-412-586259 Fax: +420-412-586257
E-mail: info@marwi.cz
Website: www.marwi.cz