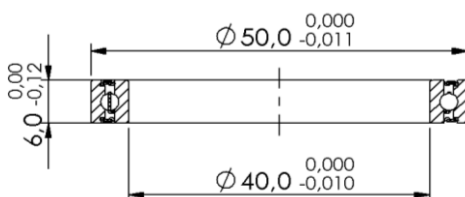


Marwi item: CB-251
Standard bearing number: 6708 2RS
Dimension (mm): 40 x 50 x 6

Scale 1:1



Technical specifications:

Races:	CrMo
Balls:	CrMo (HRC 61-66)
Retainer:	Steel
Sealing:	Rubber 2RS (light contact)
Grease:	Multemp SRL (Kyodo Yushi)
Tolerance:	ABEC-3
Quantity of balls:	25 pcs
Dimension of balls:	2,381mm (3/32")
Basic dynamic load rating:	2,518 kN
Basic static load rating:	2,234 kN

Applications:

Bottom bracket:	Various brands
Frame (suspension pivot):	Various brands